

Recombinant

DGRmAb®

ATG7 (DGR21045) Rabbit mAb (PBS Only)

db11414-PBS

Package : 10µg 100µg

Product Name : ATG7 (DGR21045) Rabbit mAb (PBS Only)**Cat.No.:** db11414-PBS**Synonyms** : GSA7; APG7L; APG7-LIKE**Application** : WB, IHC-P, ICC/IF, FC, IP**Reactivity** : Human**Host species** : Rabbit**Background**

This gene encodes an E1-like activating enzyme that is essential for autophagy and cytoplasmic to vacuole transport. The encoded protein is also thought to modulate p53-dependent cell cycle pathways during prolonged metabolic stress. It has been associated with multiple functions, including axon membrane trafficking, axonal homeostasis, mitophagy, adipose differentiation, and hematopoietic stem cell maintenance. Alternative splicing results in multiple transcript variants. [provided by RefSeq, Sep 2015]

Immunogen

A synthetic peptide of human ATG7

Gene ID

10533

Swiss Prot

O95352

Synonyms

GSA7; APG7L; APG7-LIKE

Reactivity

Human

Application

WB, IHC-P, ICC/IF, FC, IP

Calculated MW

78 kDa

Observed MW

78 kDa

Host species

Rabbit

Clonality

Monoclonal

Clonality No.

DGR21045

Isotype

IgG

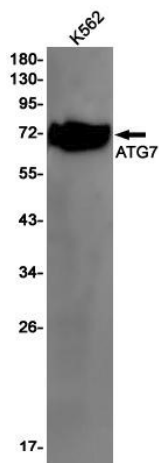
Purity

Affinity Purification

Conjugation

Un-conjugated

Concentration	1 mg/mL
Formulation	PBS Only
Storage Stability	Store at -20°C. Recommended to aliquot into single-use vials. Supplied in 1X PBS (pH 7.4). BSA and Azide Free. Stable for 12 months from date of receipt.



Western blot detection of ATG7 in K562 cell lysates using ATG7 antibody(1:1000 diluted).

Immunofluorescence analysis of HeLa cells labelling ATG7 with [db11414](#).

The cells were fixed with cold 100% methanol (10min, 4°C) and blocked in 1% BSA/10% normal goat serum/0.3M glycine in 0.1% PBS-Tween 20 for 1h. The cells were then incubate with [db11414](#) (1:100) at room temprature for 1h, followed by a further incubation at room temperature for 45min with Goat Anti Rabbit IgG (H+L)-AF488 [db10005](#), shown in green). Nuclear DNA was labeled in blue with DAPI.

Control: Secondary antibody only.