

Recombinant

DGRmAb®

Apolipoprotein A I (DGR18985) Rabbit mAb (PBS Only)

db14587-PBS

Package : 100µg

Product Name : Apolipoprotein A I (DGR18985) Rabbit mAb (PBS Only)**Cat.No.:** db14587-PBS**Synonyms** : apo(a)**Application** : WB, IHC-P, ICC/IF, FC, IP**Reactivity** : Human**Host species** : Rabbit**Background**

This gene encodes apolipoprotein A-I, which is the major protein component of high density lipoprotein (HDL) in plasma. The encoded preproprotein is proteolytically processed to generate the mature protein, which promotes cholesterol efflux from tissues to the liver for excretion, and is a cofactor for lecithin cholesterolacyltransferase (LCAT), an enzyme responsible for the formation of most plasma cholesteryl esters. This gene is closely linked with two other apolipoprotein genes on chromosome 11. Defects in this gene are associated with HDL deficiencies, including Tangier disease, and with systemic non-neuropathic amyloidosis. Alternative splicing results in multiple transcript variants, at least one of which encodes a preproprotein. [provided by RefSeq, Dec 2015]

Immunogen

A synthetic peptide of human Apolipoprotein A I

Gene ID

335

Swiss Prot

P02647

Synonyms

apo(a)

Reactivity

Human

Application

WB, IHC-P, ICC/IF, FC, IP

Calculated MW

31 kDa

Observed MW

31 kDa

Host species

Rabbit

Clonality

Monoclonal

Clonality No.

DGR18985

Isotype

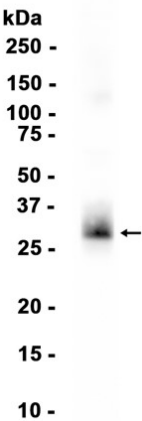
IgG

Purity

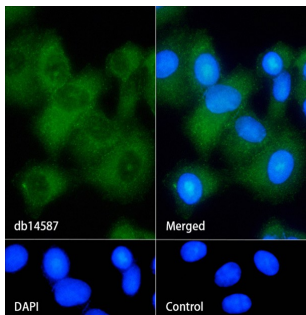
Affinity Purification

Conjugation	Un-conjugated
Concentration	1 mg/mL
Formulation	PBS Only
Storage Stability	Store at -20°C. Recommended to aliquot into single-use vials. Supplied in 1X PBS (pH 7.4). BSA and Azide Free. Stable for 12 months from date of receipt.

Human plasma



Western blot analysis of extracts from Human plasma tissue using [db14587](#) at 1:1000.



Immunofluorescence analysis of HepG2 cells labelling Apolipoprotein A I with [db14587](#).

The cells were fixed with cold 100% methanol (10min, 4°C) and blocked in 1% BSA/10% normal goat serum/0.3M glycine in 0.1% PBS-Tween 20 for 1h. The cells were then incubate with [db14587](#) (1:100) at room temprature for 1h, followed by a further incubation at room temprature for 45min with Goat Anti Rabbit IgG (H+L)-AF488 [db10005](#), shown in green). Nuclear DNA was labeled in blue with DAPI.

Control: Secondary antibody only.