

Recombinant

DGRmAb®

AKT1/2 (DGR14626) Rabbit mAb (PBS Only)

db12479-PBS

Package : 10µg 100µg

Product Name : AKT1/2 (DGR14626) Rabbit mAb (PBS Only)**Cat.No.:** db12479-PBS**Synonyms** : PKBB; PRKBB; HIHGHH; PKBBETA; RAC-BETA**Application** : WB, IHC-P, ICC/IF, FC, IP**Reactivity** : Human,Mouse,Rat**Host species** : Rabbit**Background**

This gene is a putative oncogene encoding a protein belonging to a subfamily of serine/threonine kinases containing SH2-like (Src homology 2-like) domains. The gene was shown to be amplified and overexpressed in 2 of 8 ovarian carcinoma cell lines and 2 of 15 primary ovarian tumors. Overexpression contributes to the malignant phenotype of a subset of human ductal pancreatic cancers. The encoded protein is a general protein kinase capable of phosphorylating several known proteins. [provided by RefSeq, Jul 2008]

Immunogen

Recombinant protein of human AKT2

Gene ID

208

Swiss Prot

P31751

Synonyms

PKBB; PRKBB; HIHGHH; PKBBETA; RAC-BETA

Reactivity

Human,Mouse,Rat

Application

WB, IHC-P, ICC/IF, FC, IP

Calculated MW

56 kDa

Observed MW

56 kDa

Host species

Rabbit

Clonality

Monoclonal

Clonality No.

DGR14626

Isotype

IgG

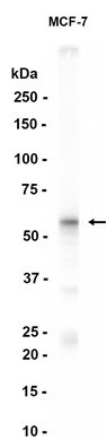
Purity

Affinity Purification

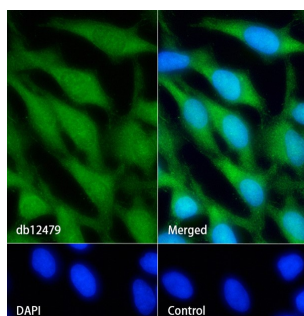
Conjugation

Un-conjugated

Concentration	1 mg/mL
Formulation	PBS Only
Storage Stability	Store at -20°C. Recommended to aliquot into single-use vials. Supplied in 1X PBS (pH 7.4). BSA and Azide Free. Stable for 12 months from date of receipt.



Western blot analysis of extracts from MCF-7 cells using [db12479](#) at 1:1000.



Immunofluorescence analysis of HeLa cells labelling AKT1/2 with [db12479](#).

The cells were fixed with cold 100% methanol (10min, 4°C) and blocked in 1% BSA/10% normal goat serum/0.3M glycine in 0.1% PBS-Tween 20 for 1h. The cells were then incubate with [db12479](#) (1:200) at room temprature for 1h, followed by a further incubation at room temperature for 45min with Goat Anti Rabbit IgG (H+L)-AF488 [db10005](#), shown in green). Nuclear DNA was labeled in blue with DAPI.

Control: Secondary antibody only.