

Recombinant

DGRmAb®

4E BP1 (DGR14165) Rabbit mAb (PBS Only)

db11599-PBS

Package : 100µg

Product Name : 4E BP1 (DGR14165) Rabbit mAb (PBS Only)**Cat.No.:** db11599-PBS**Synonyms :** BP-1; 4EBP1; 4E-BP1; PHAS-I**Application :** WB, IHC-P, ICC/IF, FC, IP**Reactivity :** Human,Mouse,Rat**Host species :** Rabbit**Background**

This gene encodes one member of a family of translation repressor proteins. The protein directly interacts with eukaryotic translation initiation factor 4E (eIF4E), which is a limiting component of the multisubunit complex that recruits 40S ribosomal subunits to the 5' end of mRNAs. Interaction of this protein with eIF4E inhibits complex assembly and represses translation. This protein is phosphorylated in response to various signals including UV irradiation and insulin signaling, resulting in its dissociation from eIF4E and activation of mRNA translation. [provided by RefSeq, Jul 2008]

Immunogen

A synthetic peptide of human eIF4EBP1

Gene ID

1978

Swiss Prot

Q13541

Synonyms

BP-1; 4EBP1; 4E-BP1; PHAS-I

Reactivity

Human,Mouse,Rat

Application

WB, IHC-P, ICC/IF, FC, IP

Calculated MW

13 kDa

Observed MW

15-20 kDa

Host species

Rabbit

Clonality

Monoclonal

Clonality No.

DGR14165

Isotype

IgG

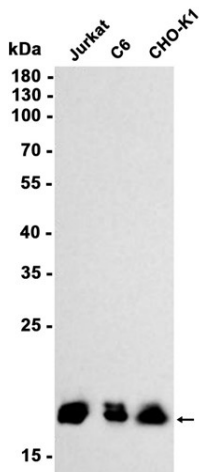
Purity

Affinity Purification

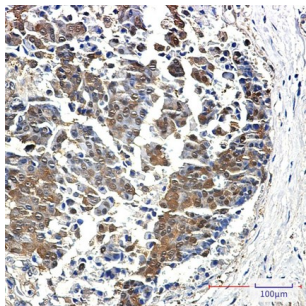
Conjugation

Un-conjugated

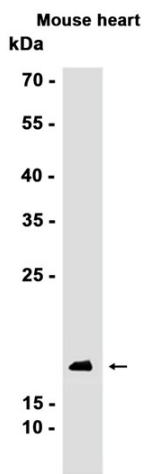
Concentration	1 mg/mL
Formulation	PBS Only
Storage Stability	Store at -20°C. Recommended to aliquot into single-use vials. Supplied in 1X PBS (pH 7.4). BSA and Azide Free. Stable for 12 months from date of receipt.



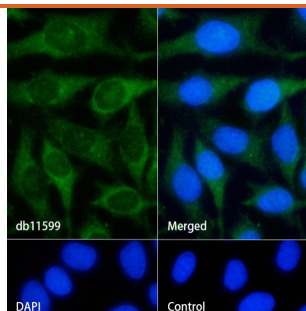
Western blot analysis of extracts from Jurkat, C6, CHO-K1 cells using [db11599](#) at 1:1000.



Immunohistochemical analysis of paraffin-embedded human breast cancer using [db11599](#) antibody.



Western blot analysis of extracts from Mouse heart tissue using [db11599](#) at 1:1000.



Immunofluorescence analysis of HeLa cells labelling 4E BP1 with [db11599](#).

The cells were fixed with cold 100% methanol (10min, 4°C) and blocked in 1% BSA/10% normal goat serum/0.3M glycine in 0.1% PBS-Tween 20 for 1h. The cells were then incubate with [db11599](#) (1:200) at room temprature for 1h, followed by a further incubation at room temperature for 45min with Goat Anti Rabbit IgG (H+L)-AF488 [db10005](#), shown in green).

Nuclear DNA was labeled in blue with DAPI.

Control: Secondary antibody only.