

Recombinant

DGRmAb®

SHP2 (DGR19305) Rabbit mAb (PBS Only)

db14530-PBS

Package : 10µg 100µg

Product Name : SHP2 (DGR19305) Rabbit mAb (PBS Only)**Cat.No.:** db14530-PBS**Synonyms** : CFC; NS1; JMML; SHP2; BPTP3; PTP2C; METCDS; PTP-1D; SH-PTP2; SH-PTP3**Application** : WB, IP**Reactivity** : Human,Mouse,Rat**Host species** : Rabbit**Background**

The protein encoded by this gene is a member of the protein tyrosine phosphatase (PTP) family. PTPs are known to be signaling molecules that regulate a variety of cellular processes including cell growth, differentiation, mitotic cycle, and oncogenic transformation. This PTP contains two tandem Src homology-2 domains, which function as phospho-tyrosine binding domains and mediate the interaction of this PTP with its substrates. This PTP is widely expressed in most tissues and plays a regulatory role in various cell signaling events that are important for a diversity of cell functions, such as mitogenic activation, metabolic control, transcription regulation, and cell migration. Mutations in this gene are a cause of Noonan syndrome as well as acute myeloid leukemia. [provided by RefSeq, Aug 2016]

Immunogen

Recombinant protein of human SHP2

Gene ID

5781

Swiss Prot

Q06124

Synonyms

CFC; NS1; JMML; SHP2; BPTP3; PTP2C; METCDS; PTP-1D; SH-PTP2; SH-PTP3

Reactivity

Human,Mouse,Rat

Application

WB, IP

Calculated MW

68 kDa

Observed MW

68 kDa

Host species

Rabbit

Clonality

Monoclonal

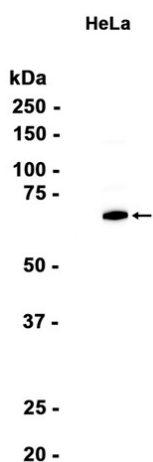
Clonality No.

DGR19305

Isotype

IgG

Purity	Affinity Purification
Conjugation	Un-conjugated
Concentration	1 mg/mL
Formulation	PBS Only
Storage Stability	Store at -20°C. Recommended to aliquot into single-use vials. Supplied in 1X PBS (pH 7.4). BSA and Azide Free. Stable for 12 months from date of receipt.



Western blot analysis of extracts from HeLa cells using db14530 at 1:1000.