

Recombinant

DGRmAb®

## Apolipoprotein E (DGR13552) Rabbit mAb (PBS Only)

db15540-PBS

Package : 100µg

**Product Name** : Apolipoprotein E (DGR13552) Rabbit mAb (PBS Only)**Cat.No.:** db15540-PBS**Synonyms** : AD2; LPG; APO-E; ApoE4; LDLCQ5**Application** : WB, IHC-P, ICC/IF, FC, IP**Reactivity** : Human**Host species** : Rabbit**Background**

The protein encoded by this gene is a major apoprotein of the chylomicron. It binds to a specific liver and peripheral cell receptor, and is essential for the normal catabolism of triglyceride-rich lipoprotein constituents. This gene maps to chromosome 19 in a cluster with the related apolipoprotein C1 and C2 genes. Mutations in this gene result in familial dysbetalipoproteinemia, or type III hyperlipoproteinemia (HLP III), in which increased plasma cholesterol and triglycerides are the consequence of impaired clearance of chylomicron and VLDL remnants. [provided by RefSeq, Jun 2016]

**Immunogen**

A synthetic peptide of human Apolipoprotein E

**Gene ID**

348

**Swiss Prot**

P02649

**Synonyms**

AD2; LPG; APO-E; ApoE4; LDLCQ5

**Reactivity**

Human

**Application**

WB, IHC-P, ICC/IF, FC, IP

**Recommended dilution**

WB: 1:1000-1:5000

IHC-P: 1:200-1:1000

ICC/IF: 1:50

FC: 1:20

IP: 1:20

**Calculated MW**

36 kDa

**Observed MW**

36 kDa

**Host species**

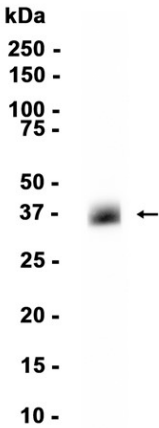
Rabbit

**Clonality**

Monoclonal

Clonality No.	DGR13552
Isotype	IgG
Purity	Affinity Purification
Conjugation	PBS Only
Concentration	1mg/mL
Storage Stability	Store at -20°C. Recommended to aliquot into single-use vials. Supplied in 1X PBS (pH 7.4). BSA and Azide Free. Stable for 12 months from date of receipt.

Human plasma



Western blot analysis of extracts from Human plasma tissue using [db15540](#)