

Recombinant

DGRmAb®

Laminin beta 1 (DGR34124) Rabbit mAb (PBS Only)

db12082-PBS

Package : 100µg

Product Name : Laminin beta 1 (DGR34124) Rabbit mAb (PBS Only)**Cat.No.:** db12082-PBS**Synonyms** : CLM; LIS5**Application** : WB, ICC/IF**Reactivity** : Human,Mouse,Rat**Host species** : Rabbit**Background**

Laminins, a family of extracellular matrix glycoproteins, are the major noncollagenous constituent of basement membranes. They have been implicated in a wide variety of biological processes including cell adhesion, differentiation, migration, signaling, neurite outgrowth and metastasis. Laminins are composed of 3 non identical chains: laminin alpha, beta and gamma (formerly A, B1, and B2, respectively) and they form a cruciform structure consisting of 3 short arms, each formed by a different chain, and a long arm composed of all 3 chains. Each laminin chain is a multidomain protein encoded by a distinct gene. Several isoforms of each chain have been described. Different alpha, beta and gamma chain isomers combine to give rise to different heterotrimeric laminin isoforms which are designated by Arabic numerals in the order of their discovery, i.e. alpha1beta1gamma1 heterotrimer is laminin 1. The biological functions of the different chains and trimer molecules are largely unknown, but some of the chains have been shown to differ with respect to their tissue distribution, presumably reflecting diverse functions in vivo. This gene encodes the beta chain isoform laminin, beta 1. The beta 1 chain has 7 structurally distinct domains which it shares with other beta chain isomers. The C-terminal helical region containing domains I and II are separated by domain alpha, domains III and V contain several EGF-like repeats, and domains IV and VI have a globular conformation. Laminin, beta 1 is expressed in most tissues that produce basement membranes, and is one of the 3 chains constituting laminin 1, the first laminin isolated from Engelbreth-Holm-Swarm (EHS) tumor. A sequence in the beta 1 chain that is involved in cell attachment, chemotaxis, and binding to the laminin receptor was identified and shown to have the capacity to inhibit metastasis. [provided by RefSeq, Aug 2011]

Immunogen

A synthetic peptide of human Laminin beta 1

Gene ID

3912

Swiss Prot

P07942

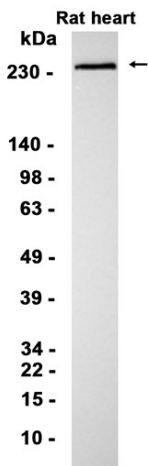
Synonyms

CLM; LIS5

Reactivity

Human,Mouse,Rat

Application	WB, ICC/IF
Recommended dilution	WB: 1:1000 ICC/IF: 1:100
Calculated MW	198 kDa
Observed MW	240 kDa
Host species	Rabbit
Clonality	Monoclonal
Clonality No.	DGR34124
Isotype	IgG
Purity	Affinity Purification
Conjugation	Un-conjugated
Concentration	1 mg/ml
Formulation	PBS Only
Storage Stability	Store at -20°C. Recommended to aliquot into single-use vials. Supplied in 1X PBS (pH 7.4). BSA and Azide Free. Stable for 12 months from date of receipt.



Western blot analysis of extracts from Rat heart tissue using [db12082](#)