

Recombinant

DGRmAb®

**CAPG (DGR36030) Rabbit mAb (PBS Only)**

db16265-PBS

Package : 100µg

**Product Name** : CAPG (DGR36030) Rabbit mAb (PBS Only)**Cat.No.:** db16265-PBS**Synonyms** : MCP; AFCP; HEL-S-66**Application** : WB**Reactivity** : Human, Mouse, Rat**Host species** : Rabbit**Background**

This gene encodes a member of the gelsolin/villin family of actin-regulatory proteins. The encoded protein reversibly blocks the barbed ends of F-actin filaments in a  $\text{Ca}^{2+}$  and phosphoinositide-regulated manner, but does not sever preformed actin filaments. By capping the barbed ends of actin filaments, the encoded protein contributes to the control of actin-based motility in non-muscle cells. Alternatively spliced transcript variants have been observed for this gene. [provided by RefSeq, Jan 2012]

**Immunogen**

Recombinant protein of human CAPG

**Gene ID**

822, 12332, 297339

**Swiss Prot**

P40121, P24452, Q6AYC4

**Synonyms**

MCP; AFCP; HEL-S-66

**Reactivity**

Human, Mouse, Rat

**Application**

WB

**Recommended dilution**

WB: 1:2000-1:20000

**Calculated MW**

39 kDa

**Observed MW**

39 kDa

**Host species**

Rabbit

**Clonality**

Monoclonal

**Clonality No.**

DGR36030

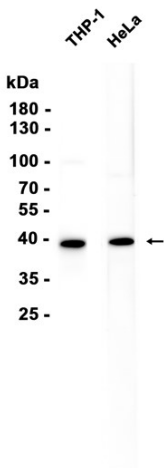
**Isotype**

IgG

**Purity**

Affinity Purification

Conjugation	Un-conjugated
Concentration	1 mg/ml
Formulation	PBS Only
Storage Stability	Store at -20°C. Recommended to aliquot into single-use vials. Supplied in 1X PBS (pH 7.4). BSA and Azide Free. Stable for 12 months from date of receipt.



Western blot analysis of extracts from THP-1, HeLa cells using [db16265](#)