

Recombinant

DGRmAb®

IGF-I receptor alpha (DGR32099) Rabbit mAb (PBS Only)

db13134-PBS

Package : 100µg

Product Name : IGF-I receptor alpha (DGR32099) Rabbit mAb (PBS Only)**Cat.No.:** db13134-PBS**Synonyms :** IGFR; CD221; IGFI; JTK13; IGF1R**Application :** WB, IHC-P**Reactivity :** Human**Host species :** Rabbit**Background**

This receptor binds insulin-like growth factor with a high affinity. It has tyrosine kinase activity. The insulin-like growth factor I receptor plays a critical role in transformation events. Cleavage of the precursor generates alpha and beta subunits. It is highly overexpressed in most malignant tissues where it functions as an anti-apoptotic agent by enhancing cell survival. Alternatively spliced transcript variants encoding distinct isoforms have been found for this gene. [provided by RefSeq, May 2014]

Immunogen

Recombinant protein of human IGF-I receptor alpha

Gene ID

3480

Swiss Prot

P08069

Synonyms

IGFR; CD221; IGFI; JTK13; IGF1R

Reactivity

Human

Application

WB, IHC-P

Recommended dilutionWB: 1:1000
IHC-P: 1:200-1:500**Observed MW**

140 kDa

Host species

Rabbit

Clonality

Monoclonal

Clonality No.

DGR32099

Isotype

IgG

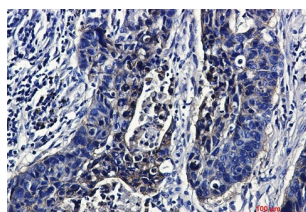
Purity

Affinity Purification

Conjugation

Un-conjugated

Concentration	1 mg/ml
Formulation	PBS Only
Storage Stability	Store at -20°C. Recommended to aliquot into single-use vials. Supplied in 1X PBS (pH 7.4). BSA and Azide Free. Stable for 12 months from date of receipt.



Immunohistochemical analysis of paraffin-embedded Immunohistochemistry analysis of human lung cancer using [db13134](#)