

Recombinant

DGRmAb®

**ABL1 (DGR34161) Rabbit mAb (PBS Only)**

db12439-PBS

Package : 10µg 100µg

**Product Name** : ABL1 (DGR34161) Rabbit mAb (PBS Only)**Cat.No.:** db12439-PBS**Synonyms** : ABL; JTK7; p150; c-ABL; v-abl; CHDSKM; c-ABL1; BCR-ABL; bcr/abl**Application** : WB, FC**Reactivity** : Human**Host species** : Rabbit**Background**

This gene is a protooncogene that encodes a protein tyrosine kinase involved in a variety of cellular processes, including cell division, adhesion, differentiation, and response to stress. The activity of the protein is negatively regulated by its SH3 domain, whereby deletion of the region encoding this domain results in an oncogene. The ubiquitously expressed protein has DNA-binding activity that is regulated by CDC2-mediated phosphorylation, suggesting a cell cycle function. This gene has been found fused to a variety of translocation partner genes in various leukemias, most notably the t(9;22) translocation that results in a fusion with the 5' end of the breakpoint cluster region gene (BCR; MIM:151410). Alternative splicing of this gene results in two transcript variants, which contain alternative first exons that are spliced to the remaining common exons. [provided by RefSeq, Aug 2014]

**Immunogen**

Recombinant protein of human ABL1

**Gene ID**

25

**Swiss Prot**

P00519

**Synonyms**

ABL; JTK7; p150; c-ABL; v-abl; CHDSKM; c-ABL1; BCR-ABL; bcr/abl

**Reactivity**

Human

**Application**

WB, FC

**Calculated MW**

123 kDa

**Observed MW**

135 kDa

**Host species**

Rabbit

**Clonality**

Monoclonal

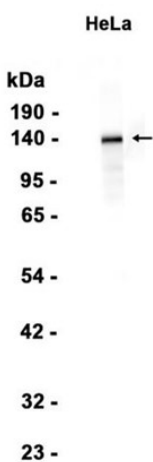
**Clonality No.**

DGR34161

**Isotype**

IgG

<b>Purity</b>	Affinity Purification
<b>Conjugation</b>	Un-conjugated
<b>Concentration</b>	1 mg/mL
<b>Formulation</b>	PBS Only
<b>Storage Stability</b>	Store at -20°C. Recommended to aliquot into single-use vials. Supplied in 1X PBS (pH 7.4). BSA and Azide Free. Stable for 12 months from date of receipt.



Western blot analysis of extracts from HeLa cells using [db12439](#) at 1:1000.