

Recombinant

DGRmAb®

CRF (DGR33444) Rabbit mAb (PBS Only)

db13150-PBS

Package : 100µg

Product Name : CRF (DGR33444) Rabbit mAb (PBS Only)**Cat.No.:** db13150-PBS**Synonyms** : CRF; CRH1**Application** : WB**Reactivity** : Human,Mouse,Rat**Host species** : Rabbit**Background**

This gene encodes a member of the corticotropin-releasing factor family. The encoded preproprotein is proteolytically processed to generate the mature neuropeptide hormone. In response to stress, this hormone is secreted by the paraventricular nucleus (PVN) of the hypothalamus, binds to corticotropin releasing hormone receptors and stimulates the release of adrenocorticotrophic hormone from the pituitary gland. Marked reduction in this protein has been observed in association with Alzheimer's disease. Autosomal recessive hypothalamic corticotropin deficiency has multiple and potentially fatal metabolic consequences including hypoglycemia and hepatitis. In addition to production in the hypothalamus, this protein is also synthesized in peripheral tissues, such as T lymphocytes, and is highly expressed in the placenta. In the placenta it is a marker that determines the length of gestation and the timing of parturition and delivery. A rapid increase in circulating levels of the hormone occurs at the onset of parturition, suggesting that, in addition to its metabolic functions, this protein may act as a trigger for parturition. [provided by RefSeq, Nov 2015]

Immunogen

A synthetic peptide of human CRF

Gene ID

1392

Swiss Prot

P06850

Synonyms

CRF; CRH1

Reactivity

Human,Mouse,Rat

Application

WB

Recommended dilution

WB: 1:1000

Calculated MW

21 kDa

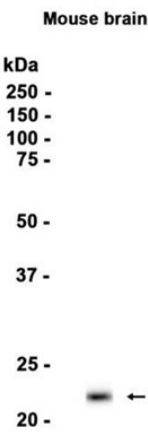
Observed MW

21 kDa

Host species

Rabbit

Clonality	Monoclonal
Clonality No.	DGR33444
Isotype	IgG
Purity	Affinity Purification
Conjugation	Un-conjugated
Concentration	1 mg/ml
Formulation	PBS Only
Storage Stability	Store at -20°C. Recommended to aliquot into single-use vials. Supplied in 1X PBS (pH 7.4). BSA and Azide Free. Stable for 12 months from date of receipt.



Western blot analysis of extracts from Mouse brain tissue using [db13150](#)