

Recombinant

DGRmAb®

alpha 1 Fetoprotein (DGR33315) Rabbit mAb (PBS Only)

db13188-PBS

Package : 100µg

Product Name : alpha 1 Fetoprotein (DGR33315) Rabbit mAb (PBS Only)**Cat.No.:** db13188-PBS**Synonyms** : AFPD; FETA; HPAFP**Application** : WB, IHC, IP**Reactivity** : Human**Host species** : Rabbit**Background**

This gene encodes alpha-fetoprotein, a major plasma protein produced by the yolk sac and the liver during fetal life. Alpha-fetoprotein expression in adults is often associated with hepatocarcinoma and with teratoma, and has prognostic value for managing advanced gastric cancer. However, hereditary persistence of alpha-fetoprotein may also be found in individuals with no obvious pathology. The protein is thought to be the fetal counterpart of serum albumin, and the alpha-fetoprotein and albumin genes are present in tandem in the same transcriptional orientation on chromosome 4. Alpha-fetoprotein is found in monomeric as well as dimeric and trimeric forms, and binds copper, nickel, fatty acids and bilirubin. The level of alpha-fetoprotein in amniotic fluid is used to measure renal loss of protein to screen for spina bifida and anencephaly. [provided by RefSeq, Oct 2019]

Immunogen

A synthetic peptide of human alpha 1 Fetoprotein

Gene ID

174

Swiss Prot

P02771

Synonyms

AFPD; FETA; HPAFP

Reactivity

Human

Application

WB, IHC, IP

Recommended dilutionWB: 1:1000
IHC: 1:100
IP: 1:20**Calculated MW**

69 kDa

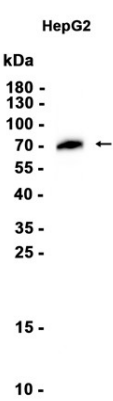
Observed MW

70 kDa

Host species

Rabbit

Clonality	Monoclonal
Clonality No.	DGR33315
Isotype	IgG
Purity	Affinity Purification
Conjugation	Un-conjugated
Concentration	1 mg/ml
Formulation	PBS Only
Storage Stability	Store at -20°C. Recommended to aliquot into single-use vials. Supplied in 1X PBS (pH 7.4). BSA and Azide Free. Stable for 12 months from date of receipt.



Western blot analysis of extracts from HepG2 cells using [db13188](#)