

Recombinant

DGRmAb®

CDC45L (DGR11553) Rabbit mAb (PBS Only)

db15967-PBS

Package : 100µg

Product Name : CDC45L (DGR11553) Rabbit mAb (PBS Only)**Cat.No.:** db15967-PBS**Synonyms :** CDC45L; MGORS7; CDC45L2; PORC-PI-1**Application :** WB, IHC-P, ICC/IF**Reactivity :** Human,Mouse,Rat**Host species :** Rabbit**Background**

The protein encoded by this gene was identified by its strong similarity with *Saccharomyces cerevisiae* Cdc45, an essential protein required to the initiation of DNA replication. Cdc45 is a member of the highly conserved multiprotein complex including Cdc6/Cdc18, the minichromosome maintenance proteins (MCMs) and DNA polymerase, which is important for early steps of DNA replication in eukaryotes. This protein has been shown to interact with MCM7 and DNA polymerase alpha. Studies of the similar gene in *Xenopus* suggested that this protein play a pivotal role in the loading of DNA polymerase alpha onto chromatin. Alternate splicing results in multiple transcript variants. [provided by RefSeq, Jul 2013]

Immunogen

A synthetic peptide of human CDC45L

Gene ID

8318

Swiss Prot

O75419

Synonyms

CDC45L; MGORS7; CDC45L2; PORC-PI-1

Reactivity

Human,Mouse,Rat

Application

WB, IHC-P, ICC/IF

Recommended dilution

WB: 1:1000-1:5000

IHC-P: 1:100-1:200

ICC/IF: 1:100-1:200

Calculated MW

66 kDa

Observed MW

66 kDa

Host species

Rabbit

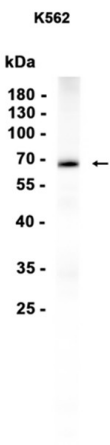
Clonality

Monoclonal

Clonality No.

DGR11553

Isotype	IgG
Purity	Affinity Purification
Conjugation	Un-conjugated
Concentration	1 mg/ml
Formulation	PBS Only
Storage Stability	Store at -20°C. Recommended to aliquot into single-use vials. Supplied in 1X PBS (pH 7.4). BSA and Azide Free. Stable for 12 months from date of receipt.



Western blot analysis of extracts from K562 cells using [db15967](#)