

Recombinant

DGRmAb®

BDNF (DGR13685) Rabbit mAb (PBS Only)

db15513-PBS

Package : 10µg 100µg

Product Name : BDNF (DGR13685) Rabbit mAb (PBS Only)**Cat.No.:** db15513-PBS**Synonyms** : ANON2; BULN2**Application** : WB, IHC-P, ICC/IF, FC**Reactivity** : Human,Mouse,Rat**Host species** : Rabbit**Background**

This gene encodes a member of the nerve growth factor family of proteins. Alternative splicing results in multiple transcript variants, at least one of which encodes a preproprotein that is proteolytically processed to generate the mature protein. Binding of this protein to its cognate receptor promotes neuronal survival in the adult brain. Expression of this gene is reduced in Alzheimer's, Parkinson's, and Huntington's disease patients. This gene may play a role in the regulation of the stress response and in the biology of mood disorders. [provided by RefSeq, Nov 2015]

Immunogen

A synthetic peptide of human BDNF

Gene ID

627, 12064, 24225

Swiss Prot

P23560, P21237, P23363

Synonyms

ANON2; BULN2

Reactivity

Human,Mouse,Rat

Application

WB, IHC-P, ICC/IF, FC

Calculated MW

15 kDa

Observed MW

Precursor 28 kDa - Mature 14 kDa

Host species

Rabbit

Clonality

Monoclonal

Clonality No.

DGR13685

Isotype

IgG

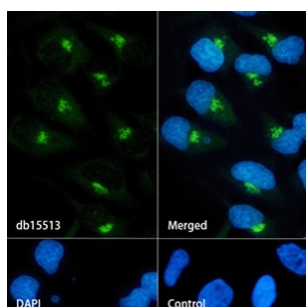
Purity

Affinity Purification

Conjugation

Un-conjugated

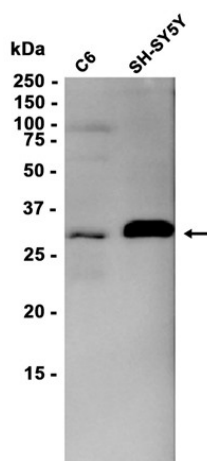
Concentration	1 mg/mL
Formulation	PBS Only
Storage Stability	Store at -20°C. Recommended to aliquot into single-use vials. Supplied in 1X PBS (pH 7.4). BSA and Azide Free. Stable for 12 months from date of receipt.



Immunofluorescence analysis of HeLa cells labelling BDNF with [db15513](#).

The cells were fixed with cold 100% methanol (10min, 4°C) and blocked in 1% BSA/10% normal goat serum/0.3M glycine in 0.1% PBS-Tween 20 for 1h. The cells were then incubate with [db15513](#) (1:500) at room temprature for 1h, followed by a further incubation at room temperature for 45min with Goat Anti Rabbit IgG (H+L)-AF488 ([db10005](#), shown in green). Nuclear DNA was labeled in blue with DAPI.

Control: Secondary antibody only.



Western blot analysis of extracts from C6, SH-SY5Y cells using [db15513](#) at 1:1000.