

Recombinant

DGRmAb®

Cyclin A2 (DGR13292) Rabbit mAb (PBS Only)

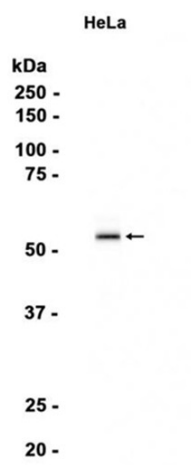
db15618-PBS

Package : 100µg

Product Name : Cyclin A2 (DGR13292) Rabbit mAb (PBS Only)**Cat.No.:** db15618-PBS**Synonyms** : CCN1; CCNA**Application** : WB, IHC-P, ICC/IF, IP**Reactivity** : Human**Host species** : Rabbit

Background	The protein encoded by this gene belongs to the highly conserved cyclin family, whose members function as regulators of the cell cycle. This protein binds and activates cyclin-dependent kinase 2 and thus promotes transition through G1/S and G2/M. [provided by RefSeq, Aug 2016]
Immunogen	Recombinant protein of human Cyclin A2
Gene ID	890
Swiss Prot	P20248
Synonyms	CCN1; CCNA
Reactivity	Human
Application	WB, IHC-P, ICC/IF, IP
Recommended dilution	WB: 1:1000 IHC-P: 1:200-1:2000 ICC/IF: 1:100-1:200 IP: 1:20-1:50
Calculated MW	49 kDa
Observed MW	49 kDa
Host species	Rabbit
Clonality	Monoclonal
Clonality No.	DGR13292
Isotype	IgG
Purity	Affinity Purification

Conjugation	Un-conjugated
Concentration	1 mg/ml
Formulation	PBS Only
Storage Stability	Store at -20°C. Recommended to aliquot into single-use vials. Supplied in 1X PBS (pH 7.4). BSA and Azide Free. Stable for 12 months from date of receipt.



Western blot analysis of extracts from HeLa cells using [db15618](#)