

Recombinant

DGRmAb®

**MMP1 (DGR12640) Rabbit mAb (PBS Only)**

db15747-PBS

Package : 100µg

**Product Name :** MMP1 (DGR12640) Rabbit mAb (PBS Only)**Cat.No.:** db15747-PBS**Synonyms :** CLG; CLGN**Application :** IHC-P, ICC/IF, FC**Reactivity :** Human**Host species :** Rabbit**Background**

This gene encodes a member of the peptidase M10 family of matrix metalloproteinases (MMPs). Proteins in this family are involved in the breakdown of extracellular matrix in normal physiological processes, such as embryonic development, reproduction, and tissue remodeling, as well as in disease processes, such as arthritis and metastasis. The encoded preproprotein is proteolytically processed to generate the mature protease. This secreted protease breaks down the interstitial collagens, including types I, II, and III. The gene is part of a cluster of MMP genes on chromosome 11. Mutations in this gene are associated with chronic obstructive pulmonary disease (COPD). Alternative splicing results in multiple transcript variants, at least one of which encodes an isoform that is proteolytically processed. [provided by RefSeq, Jan 2016]

**Immunogen**

A synthetic peptide of human MMP1

**Gene ID**

4312

**Swiss Prot**

P03956

**Synonyms**

CLG; CLGN

**Reactivity**

Human

**Application**

IHC-P, ICC/IF, FC

**Recommended dilution**

IHC-P: 1:100

ICC/IF: 1:50

FC: 1:20-1:50

**Calculated MW**

54 kDa

**Host species**

Rabbit

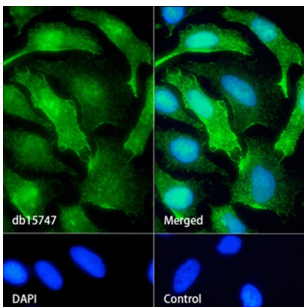
**Clonality**

Monoclonal

**Clonality No.**

DGR12640

Isotype	IgG
Purity	Affinity Purification
Conjugation	Un-conjugated
Concentration	1 mg/ml
Formulation	PBS Only
Storage Stability	Store at -20°C. Recommended to aliquot into single-use vials. Supplied in 1X PBS (pH 7.4). BSA and Azide Free. Stable for 12 months from date of receipt.



Immunofluorescence analysis of HeLa cells labelling MMP1 with db15747.

The cells were fixed with 4% PFA (10min, RT) followed by treatment with 0.1% Triton X-100 (10min, RT), and blocked in 1% BSA/10% normal goat serum/0.3M glycine in 0.1% PBS-Tween 20 for 1h. The cells were then incubate with db15747 (1:50) at room temprature for 1h, followed by a further incubation at room temperature for 45min with Goat Anti Rabbit IgG (H+L)-AF488 (db10005, shown in green). Nuclear DNA was labeled in blue with DAPI.

Control: Secondary antibody only.