

Recombinant

DGRmAb®

**Fibronectin (DGR33303) Rabbit mAb (PBS Only)**

db13198-PBS

Package : 10µg 100µg

**Product Name** : Fibronectin (DGR33303) Rabbit mAb (PBS Only)**Cat.No.:** db13198-PBS**Synonyms** : FN; CIG; FNZ; MSF; ED-B; FINC; GFND; LETS; GFND2; SMDCF**Application** : WB, IHC-P, ICC/IF**Reactivity** : Human,Mouse,Rat**Host species** : Rabbit**Background**

This gene encodes fibronectin, a glycoprotein present in a soluble dimeric form in plasma, and in a dimeric or multimeric form at the cell surface and in extracellular matrix. The encoded preproprotein is proteolytically processed to generate the mature protein. Fibronectin is involved in cell adhesion and migration processes including embryogenesis, wound healing, blood coagulation, host defense, and metastasis. The gene has three regions subject to alternative splicing, with the potential to produce 20 different transcript variants, at least one of which encodes an isoform that undergoes proteolytic processing. The full-length nature of some variants has not been determined. [provided by RefSeq, Jan 2016]

**Immunogen**

A synthetic peptide of human Fibronectin

**Gene ID**

2335

**Swiss Prot**

P02751

**Synonyms**

FN; CIG; FNZ; MSF; ED-B; FINC; GFND; LETS; GFND2; SMDCF

**Reactivity**

Human,Mouse,Rat

**Application**

WB, IHC-P, ICC/IF

**Calculated MW**

263 kDa

**Observed MW**

263 kDa

**Host species**

Rabbit

**Clonality**

Monoclonal

**Clonality No.**

DGR33303

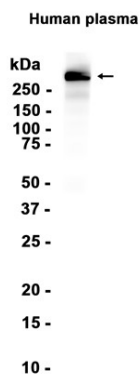
**Isotype**

IgG

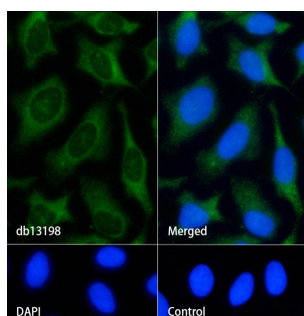
**Purity**

Affinity Purification

<b>Conjugation</b>	Un-conjugated
<b>Concentration</b>	1 mg/mL
<b>Formulation</b>	PBS Only
<b>Storage Stability</b>	Store at -20°C. Recommended to aliquot into single-use vials. Supplied in 1X PBS (pH 7.4). BSA and Azide Free. Stable for 12 months from date of receipt.



Western blot analysis of extracts from Human plasma tissue using [db13198](#) at 1:1000.



Immunofluorescence analysis of HeLa cells labelling Fibronectin with [db13198](#).

The cells were fixed with cold 100% methanol (10min, 4°C) and blocked in 1% BSA/10% normal goat serum/0.3M glycine in 0.1% PBS-Tween 20 for 1h. The cells were then incubate with [db13198](#) (1:50) at room temprature for 1h, followed by a further incubation at room temperature for 45min with Goat Anti Rabbit IgG (H+L)-AF488 [db10005](#), shown in green). Nuclear DNA was labeled in blue with DAPI.

Control: Secondary antibody only.