

Recombinant

DGRmAb®

**Cyclin D2 (DGR12228) Rabbit mAb (PBS Only)**

db15797-PBS

Package : 100µg

**Product Name** : Cyclin D2 (DGR12228) Rabbit mAb (PBS Only)**Cat.No.:** db15797-PBS**Synonyms** : MPPH3; KIAK0002**Application** : WB, ICC/IF, FC, IP**Reactivity** : Human**Host species** : Rabbit**Background**

The protein encoded by this gene belongs to the highly conserved cyclin family, whose members are characterized by a dramatic periodicity in protein abundance through the cell cycle. Cyclins function as regulators of CDK kinases. Different cyclins exhibit distinct expression and degradation patterns which contribute to the temporal coordination of each mitotic event. This cyclin forms a complex with CDK4 or CDK6 and functions as a regulatory subunit of the complex, whose activity is required for cell cycle G1/S transition. This protein has been shown to interact with and be involved in the phosphorylation of tumor suppressor protein Rb. Knockout studies of the homologous gene in mouse suggest the essential roles of this gene in ovarian granulosa and germ cell proliferation. High level expression of this gene was observed in ovarian and testicular tumors. Mutations in this gene are associated with megalencephaly-polymicrogyria-polydactyly-hydrocephalus syndrome 3 (MPPH3). [provided by RefSeq, Sep 2014]

**Immunogen**

Recombinant protein of human Cyclin D2

**Gene ID**

894

**Swiss Prot**

P30279

**Synonyms**

MPPH3; KIAK0002

**Reactivity**

Human

**Application**

WB, ICC/IF, FC, IP

**Recommended dilution**

WB: 1:1000

ICC/IF: 1:100

FC: 1:200-1:500

IP: 1:20-1:50

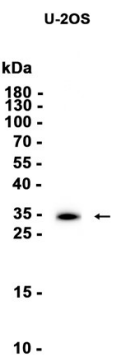
**Calculated MW**

33 kDa

**Observed MW**

33 kDa

Host species	Rabbit
Clonality	Monoclonal
Clonality No.	DGR12228
Isotype	IgG
Purity	Affinity Purification
Conjugation	Un-conjugated
Concentration	1 mg/ml
Formulation	PBS Only
Storage Stability	Store at -20°C. Recommended to aliquot into single-use vials. Supplied in 1X PBS (pH 7.4). BSA and Azide Free. Stable for 12 months from date of receipt.



Western blot analysis of extracts from U-2OS cells using [db15797](#)