

Recombinant

DGRmAb®

## CAP1 (DGR11569) Rabbit mAb (PBS Only)

db15964-PBS

Package : 100µg

**Product Name :** CAP1 (DGR11569) Rabbit mAb (PBS Only)**Cat.No.:** db15964-PBS**Synonyms :** CAP; CAP1-PEN**Application :** WB, IHC-P, ICC/IF**Reactivity :** Human**Host species :** Rabbit**Background**

The protein encoded by this gene is related to the *S. cerevisiae* CAP protein, which is involved in the cyclic AMP pathway. The human protein is able to interact with other molecules of the same protein, as well as with CAP2 and actin. Alternatively spliced transcript variants encoding different isoforms have been identified. [provided by RefSeq, Aug 2016]

**Immunogen**

A synthetic peptide of human CAP1

**Gene ID**

10487

**Swiss Prot**

Q01518

**Synonyms**

CAP; CAP1-PEN

**Reactivity**

Human

**Application**

WB, IHC-P, ICC/IF

**Recommended dilution**

WB: 1:2000-1:20000

IHC-P: 1:100-1:200

ICC/IF: 1:200-1:500

**Calculated MW**

52 kDa

**Observed MW**

52 kDa

**Host species**

Rabbit

**Clonality**

Monoclonal

**Clonality No.**

DGR11569

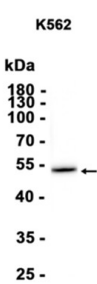
**Isotype**

IgG

**Purity**

Affinity Purification

Conjugation	Un-conjugated
Concentration	1 mg/ml
Formulation	PBS Only
Storage Stability	Store at -20°C. Recommended to aliquot into single-use vials. Supplied in 1X PBS (pH 7.4). BSA and Azide Free. Stable for 12 months from date of receipt.



Western blot analysis of extracts from K562 cells using [db15964](#)