

Recombinant

DGRmAb®

MCM7 (DGR17001) Rabbit mAb (PBS Only)

db11990-PBS

Package : 100µg

Product Name : MCM7 (DGR17001) Rabbit mAb (PBS Only)**Cat.No.:** db11990-PBS**Synonyms :** MCM2; CDC47; P85MCM; P1CDC47; PNAS146; PPP1R104; P1.1-MCM3**Application :** WB, IHC-P, ICC/IF, FC, IP**Reactivity :** Human,Mouse,Rat**Host species :** Rabbit**Background**

The protein encoded by this gene is one of the highly conserved mini-chromosome maintenance proteins (MCM) that are essential for the initiation of eukaryotic genome replication. The hexameric protein complex formed by the MCM proteins is a key component of the pre-replication complex (pre_RC) and may be involved in the formation of replication forks and in the recruitment of other DNA replication related proteins. The MCM complex consisting of this protein and MCM2, 4 and 6 proteins possesses DNA helicase activity, and may act as a DNA unwinding enzyme. Cyclin D1-dependent kinase, CDK4, is found to associate with this protein, and may regulate the binding of this protein with the tumoursuppressor protein RB1/RB. Alternatively spliced transcript variants encoding distinct isoforms have been reported. [provided by RefSeq, Jul 2008]

Immunogen

A synthetic peptide of human MCM7

Gene ID

4176

Swiss Prot

P33993

Synonyms

MCM2; CDC47; P85MCM; P1CDC47; PNAS146; PPP1R104; P1.1-MCM3

Reactivity

Human,Mouse,Rat

Application

WB, IHC-P, ICC/IF, FC, IP

Recommended dilution

WB: 1:1000

IHC-P: 1:50

ICC/IF: 1:50

FC: 1:20

IP: 1:20

Calculated MW

81 kDa

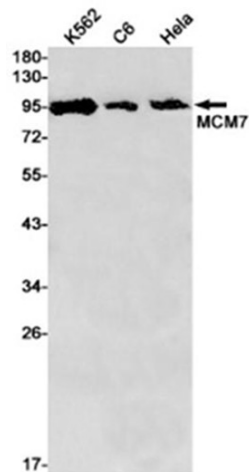
Observed MW

81 kDa

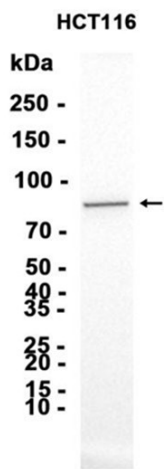
Host species

Rabbit

Clonality	Monoclonal
Clonality No.	DGR17001
Isotype	IgG
Purity	Affinity Purification
Conjugation	Un-conjugated
Concentration	1 mg/ml
Formulation	PBS Only
Storage Stability	Store at -20°C. Recommended to aliquot into single-use vials. Supplied in 1X PBS (pH 7.4). BSA and Azide Free. Stable for 12 months from date of receipt.



Western blot detection of MCM7 in K562,C6,HeLa cell lysates using [db11990](#)(1:1000 diluted).



Western blot analysis of extracts from HCT116 cells using [db11990](#)