

Recombinant

DGRmAb®

Ataxin 1 (DGR14428) Rabbit mAb (PBS Only)

db12665-PBS

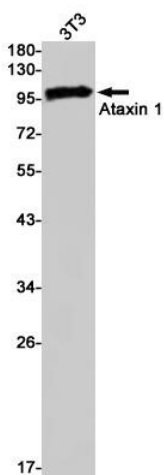
Package : 10µg 100µg

Product Name : Ataxin 1 (DGR14428) Rabbit mAb (PBS Only)**Cat.No.:** db12665-PBS**Synonyms** : ATX1; SCA1; D6S504E**Application** : WB, IP**Reactivity** : Human**Host species** : Rabbit**Background**

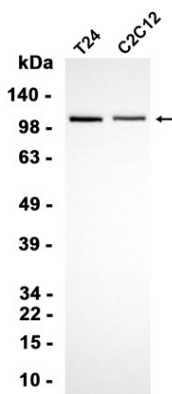
The autosomal dominant cerebellar ataxias (ADCA) are a heterogeneous group of neurodegenerative disorders characterized by progressive degeneration of the cerebellum, brain stem and spinal cord. Clinically, ADCA has been divided into three groups: ADCA types I-III. ADCA I is genetically heterogeneous, with five genetic loci, designated spinocerebellar ataxia (SCA) 1, 2, 3, 4 and 6, being assigned to five different chromosomes. ADCA II, which always presents with retinal degeneration (SCA7), and ADCA III often referred to as the 'pure' cerebellar syndrome (SCA5), are most likely homogeneous disorders. Several SCA genes have been cloned and shown to contain CAG repeats in their coding regions. ADCA is caused by the expansion of the CAG repeats, producing an elongated polyglutamine tract in the corresponding protein. The expanded repeats are variable in size and unstable, usually increasing in size when transmitted to successive generations. The function of the ataxins is not known. This locus has been mapped to chromosome 6, and it has been determined that the diseased allele contains 40-83 CAG repeats, compared to 6-39 in the normal allele, and is associated with spinocerebellar ataxia type 1 (SCA1). At least two transcript variants encoding the same protein have been found for this gene. [provided by RefSeq, Jul 2016]

Immunogen Recombinant protein of human Ataxin 1**Gene ID** 6310**Swiss Prot** P54253**Synonyms** ATX1; SCA1; D6S504E**Reactivity** Human**Application** WB, IP**Calculated MW** 87 kDa**Observed MW** 105 kDa

Host species	Rabbit
Clonality	Monoclonal
Clonality No.	DGR14428
Isotype	IgG
Purity	Affinity Purification
Conjugation	Un-conjugated
Concentration	1 mg/mL
Formulation	PBS Only
Storage Stability	Store at -20°C. Recommended to aliquot into single-use vials. Supplied in 1X PBS (pH 7.4). BSA and Azide Free. Stable for 12 months from date of receipt.



Western blot detection of Ataxin 1 in 3T3 cell lysates using Ataxin 1 antibody(1:1000 diluted).



Western blot analysis of extracts from T24, C2C12 cells using db12665 at 1:1000.