

Recombinant

DGRmAb®

14-3-3 (DGR12777) Rabbit mAb (PBS Only)

db11123-PBS

Package : 100µg

Product Name : 14-3-3 (DGR12777) Rabbit mAb (PBS Only)**Cat.No.:** db11123-PBS**Synonyms** : HS1; GW128; YWHAA; KCIP-1; HEL-S-1**Application** : WB, IHC-P**Reactivity** : Human,Mouse,Rat**Host species** : Rabbit**Background**

This gene encodes a protein belonging to the 14-3-3 family of proteins, members of which mediate signal transduction by binding to phosphoserine-containing proteins. This highly conserved protein family is found in both plants and mammals. The encoded protein has been shown to interact with RAF1 and CDC25 phosphatases, suggesting that it may play a role in linking mitogenic signaling and the cell cycle machinery. Two transcript variants, which encode the same protein, have been identified for this gene. [provided by RefSeq, Jul 2008]

Immunogen

A synthetic peptide of human 14-3-3

Gene ID

7529

Swiss Prot

P31946

Synonyms

HS1; GW128; YWHAA; KCIP-1; HEL-S-1

Reactivity

Human,Mouse,Rat

Application

WB, IHC-P

Recommended dilutionWB: 1:1000
IHC-P: 1:100-1:200**Calculated MW**

28 kDa

Observed MW

28 kDa

Host species

Rabbit

Clonality

Monoclonal

Clonality No.

DGR12777

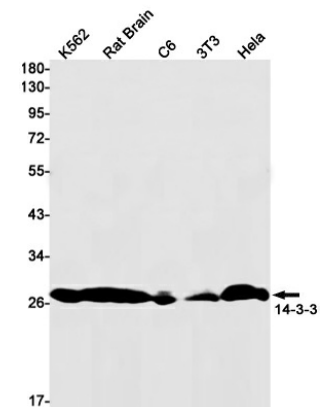
Isotype

IgG

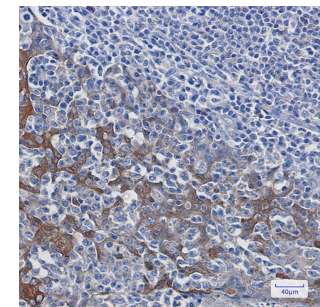
Purity

Affinity Purification

Conjugation	Un-conjugated
Concentration	1 mg/ml
Formulation	PBS Only
Storage Stability	Store at -20°C. Recommended to aliquot into single-use vials. Supplied in 1X PBS (pH 7.4). BSA and Azide Free. Stable for 12 months from date of receipt.



Western blot detection of 41701 in K562,Rat Brain,C6,3T3,Hela cell lysates using [db11123](#)(1:1000 diluted).



Immunohistochemical analysis of paraffin-embedded human tonsil using [db11123](#)