

Recombinant

DGRmAb®

**GDF15 (DGR11326) Rabbit mAb (PBS Only)**

db16020-PBS

Package : 10µg 100µg

**Product Name** : GDF15 (DGR11326) Rabbit mAb (PBS Only)**Cat.No.:** db16020-PBS**Synonyms** : PDF; MIC1; PLAB; MIC-1; NAG-1; PTGFB; GDF-15**Application** : WB, IHC-P, IP**Reactivity** : Human**Host species** : Rabbit**Background**

This gene encodes a secreted ligand of the TGF-beta (transforming growth factor-beta) superfamily of proteins. Ligands of this family bind various TGF-beta receptors leading to recruitment and activation of SMAD family transcription factors that regulate gene expression. The encoded preproprotein is proteolytically processed to generate each subunit of the disulfide-linked homodimer. The protein is expressed in a broad range of cell types, acts as a pleiotropic cytokine and is involved in the stress response program of cells after cellular injury. Increased protein levels are associated with disease states such as tissue hypoxia, inflammation, acute injury and oxidative stress. [provided by RefSeq, Aug 2016]

**Immunogen**

Recombinant protein of human GDF15

**Gene ID**

9518

**Swiss Prot**

Q99988

**Synonyms**

PDF; MIC1; PLAB; MIC-1; NAG-1; PTGFB; GDF-15

**Reactivity**

Human

**Application**

WB, IHC-P, IP

**Calculated MW**

34 kDa

**Observed MW**

35,13 kDa

**Host species**

Rabbit

**Clonality**

Monoclonal

**Clonality No.**

DGR11326

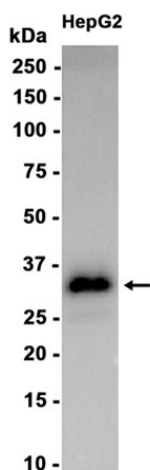
**Isotype**

IgG

**Purity**

Affinity Purification

<b>Conjugation</b>	Un-conjugated
<b>Concentration</b>	1 mg/mL
<b>Formulation</b>	PBS Only
<b>Storage Stability</b>	Store at -20°C. Recommended to aliquot into single-use vials. Supplied in 1X PBS (pH 7.4). BSA and Azide Free. Stable for 12 months from date of receipt.



Western blot analysis of extracts from HepG2 cells using [db16020](#) at 1:1000.