

Recombinant

DGRmAb®

## Ferritin Heavy Chain (DGR12836) Rabbit mAb (PBS Only)

db15709-PBS

Package : 100µg

**Product Name** : Ferritin Heavy Chain (DGR12836) Rabbit mAb (PBS Only)**Cat.No.:** db15709-PBS**Synonyms** : FHC; FTH; HFE5; PLIF; FTHL6; PIG15**Application** : WB, IHC-P**Reactivity** : Human**Host species** : Rabbit**Background**

This gene encodes the heavy subunit of ferritin, the major intracellular iron storage protein in prokaryotes and eukaryotes. It is composed of 24 subunits of the heavy and light ferritin chains. Variation in ferritin subunit composition may affect the rates of iron uptake and release in different tissues. A major function of ferritin is the storage of iron in a soluble and nontoxic state. Defects in ferritin proteins are associated with several neurodegenerative diseases. This gene has multiple pseudogenes. Several alternatively spliced transcript variants have been observed, but their biological validity has not been determined. [provided by RefSeq, Jul 2008]

**Immunogen**

A synthetic peptide of human Ferritin Heavy Chain

**Gene ID**

2495

**Swiss Prot**

P02794

**Synonyms**

FHC; FTH; HFE5; PLIF; FTHL6; PIG15

**Reactivity**

Human

**Application**

WB, IHC-P

**Calculated MW**

21 kDa

**Observed MW**

21 kDa

**Host species**

Rabbit

**Clonality**

Monoclonal

**Clonality No.**

DGR12836

**Isotype**

IgG

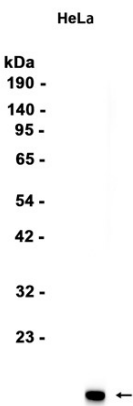
**Purity**

Affinity Purification

**Conjugation**

Un-conjugated

Concentration	1 mg/ml
Formulation	PBS Only
Storage Stability	Store at -20°C. Recommended to aliquot into single-use vials. Supplied in 1X PBS (pH 7.4). BSA and Azide Free. Stable for 12 months from date of receipt.



Western blot analysis of extracts from HeLa cells using [db15709](#)