

Recombinant

DGRmAb®

**EGFR (DGR12889) Rabbit mAb (PBS Only)**

db15699-PBS

Package : 100µg

**Product Name :** EGFR (DGR12889) Rabbit mAb (PBS Only)**Cat.No.:** db15699-PBS**Synonyms :** ERBB; HER1; mENA; ERBB1; PIG61; NISBD2**Application :** WB, ICC/IF, FC**Reactivity :** Human**Host species :** Rabbit**Background**

The protein encoded by this gene is a transmembrane glycoprotein that is a member of the protein kinase superfamily. This protein is a receptor for members of the epidermal growth factor family. EGFR is a cell surface protein that binds to epidermal growth factor. Binding of the protein to a ligand induces receptor dimerization and tyrosine autophosphorylation and leads to cell proliferation. Mutations in this gene are associated with lung cancer. [provided by RefSeq, Jun 2016]

**Immunogen**

A synthetic peptide of human EGFR

**Gene ID**

1956

**Swiss Prot**

P00533

**Synonyms**

ERBB; HER1; mENA; ERBB1; PIG61; NISBD2

**Reactivity**

Human

**Application**

WB, ICC/IF, FC

**Recommended dilution**WB: 1:1000  
ICC/IF: 1:100  
FC: 1:100-1:200**Calculated MW**

134 kDa

**Observed MW**

175 kDa

**Host species**

Rabbit

**Clonality**

Monoclonal

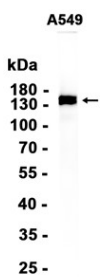
**Clonality No.**

DGR12889

**Isotype**

IgG

Purity	Affinity Purification
Conjugation	Un-conjugated
Concentration	1 mg/ml
Formulation	PBS Only
Storage Stability	Store at -20°C. Recommended to aliquot into single-use vials. Supplied in 1X PBS (pH 7.4). BSA and Azide Free. Stable for 12 months from date of receipt.



Western blot analysis of extracts from A549 cells using [db15699](#)