

Recombinant

DGRmAb®

Ephrin A1 (DGR14997) Rabbit mAb (PBS Only)

db15168-PBS

Package : 100µg

Product Name : Ephrin A1 (DGR14997) Rabbit mAb (PBS Only)**Cat.No.:** db15168-PBS**Synonyms** : B61; EFL1; ECKLG; EPLG1; LERK1; LERK-1; TNFAIP4**Application** : WB**Reactivity** : Human**Host species** : Rabbit**Background**

This gene encodes a member of the ephrin (EPH) family. The ephrins and EPH-related receptors comprise the largest subfamily of receptor protein-tyrosine kinases and have been implicated in mediating developmental events, especially in the nervous system and in erythropoiesis. Based on their structures and sequence relationships, ephrins are divided into the ephrin-A (EFNA) class, which are anchored to the membrane by a glycosylphosphatidylinositol linkage, and the ephrin-B (EFNB) class, which are transmembrane proteins. This gene encodes an EFNA class ephrin which binds to the EPHA2, EPHA4, EPHA5, EPHA6, and EPHA7 receptors. Two transcript variants that encode different isoforms were identified through sequence analysis. [provided by RefSeq, Jul 2008]

Immunogen

A synthetic peptide of human Ephrin A1

Gene ID

1942

Swiss Prot

P20827

Synonyms

B61; EFL1; ECKLG; EPLG1; LERK1; LERK-1; TNFAIP4

Reactivity

Human

Application

WB

Recommended dilution

WB: 1:1000-1:5000

Calculated MW

24 kDa

Observed MW

24 kDa

Host species

Rabbit

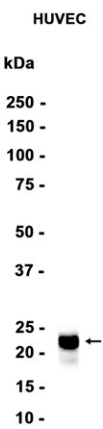
Clonality

Monoclonal

Clonality No.

DGR14997

Isotype	IgG
Purity	Affinity Purification
Conjugation	Un-conjugated
Concentration	1 mg/ml
Formulation	PBS Only
Storage Stability	Store at -20°C. Recommended to aliquot into single-use vials. Supplied in 1X PBS (pH 7.4). BSA and Azide Free. Stable for 12 months from date of receipt.



Western blot analysis of extracts from HUVEC cells using [db15168](#)