

Recombinant

DGRmAb®

Nephrin (DGR15066) Rabbit mAb (PBS Only)

db15156-PBS

Package : 100µg

Product Name : Nephrin (DGR15066) Rabbit mAb (PBS Only)**Cat.No.:** db15156-PBS**Synonyms** : CNF; NPHN; nephrin**Application** : WB, IHC-P, IP**Reactivity** : Human,Mouse,Rat**Host species** : Rabbit**Background**

This gene encodes a member of the immunoglobulin family of cell adhesion molecules that functions in the glomerular filtration barrier in the kidney. The gene is primarily expressed in renal tissues, and the protein is a type-1 transmembrane protein found at the slit diaphragm of glomerular podocytes. The slit diaphragm is thought to function as an ultrafilter to exclude albumin and other plasma macromolecules in the formation of urine. Mutations in this gene result in Finnish-type congenital nephrosis 1, characterized by severe proteinuria and loss of the slit diaphragm and foot processes.[provided by RefSeq, Oct 2009]

Immunogen

A synthetic peptide of human Nephrin

Gene ID

4868

Swiss Prot

O60500

Synonyms

CNF; NPHN; nephrin

Reactivity

Human,Mouse,Rat

Application

WB, IHC-P, IP

Recommended dilutionWB: 1:1000
IHC-P: 1:200-1:1000
IP: 1:20-1:50**Calculated MW**

135 kDa

Observed MW

200 kDa

Host species

Rabbit

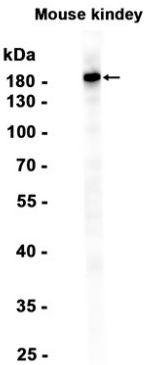
Clonality

Monoclonal

Clonality No.

DGR15066

Isotype	IgG
Purity	Affinity Purification
Conjugation	Un-conjugated
Concentration	1 mg/ml
Formulation	PBS Only
Storage Stability	Store at -20°C. Recommended to aliquot into single-use vials. Supplied in 1X PBS (pH 7.4). BSA and Azide Free. Stable for 12 months from date of receipt.



Western blot analysis of extracts from Mouse kidney tissue using [db15156](#)