

Recombinant

DGRmAb®

alpha Lactalbumin (DGR15179) Rabbit mAb (PBS Only)

db15120-PBS

Package : 10µg 100µg

Product Name : alpha Lactalbumin (DGR15179) Rabbit mAb (PBS Only)**Cat.No.:** db15120-PBS**Synonyms** : LYZG**Application** : WB**Reactivity** : Human**Host species** : Rabbit**Background**

This gene encodes alpha-lactalbumin, a principal protein of milk. Alpha-lactalbumin forms the regulatory subunit of the lactose synthase (LS) heterodimer and beta 1,4-galactosyltransferase (beta4Gal-T1) forms the catalytic component. Together, these proteins enable LS to produce lactose by transferring galactose moieties to glucose. As a monomer, alpha-lactalbumin strongly binds calcium and zinc ions and may possess bactericidal or antitumor activity. A folding variant of alpha-lactalbumin, called HAMLET, likely induces apoptosis in tumor and immature cells. [provided by RefSeq, Jul 2008]

Immunogen

A synthetic peptide of human alpha Lactalbumin

Gene ID

3906

Swiss Prot

P00709

Synonyms

LYZG

Reactivity

Human

Application

WB

Calculated MW

16 kDa

Observed MW

14 kDa

Host species

Rabbit

Clonality

Monoclonal

Clonality No.

DGR15179

Isotype

IgG

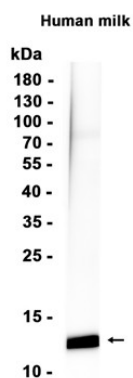
Purity

Affinity Purification

Conjugation

Un-conjugated

Concentration	1 mg/mL
Formulation	PBS Only
Storage Stability	Store at -20°C. Recommended to aliquot into single-use vials. Supplied in 1X PBS (pH 7.4). BSA and Azide Free. Stable for 12 months from date of receipt.



Western blot analysis of extracts Human milk tissue using db15120 at 1:1000.