

Recombinant

DGRmAb®

KLLN (DGR20220) Rabbit mAb (PBS Only)

db14896-PBS

Package : 100µg

Product Name : KLLN (DGR20220) Rabbit mAb (PBS Only)**Cat.No.:** db14896-PBS**Synonyms** : CWS4; KILLIN**Application** : WB**Reactivity** : Human,Mouse,Rat**Host species** : Rabbit

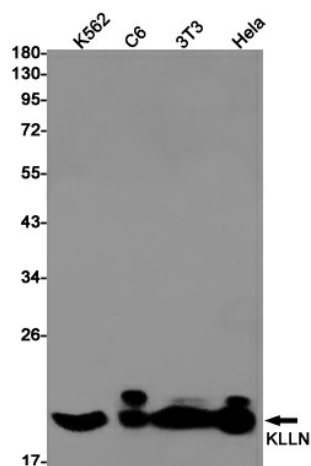
Background	The protein encoded by this intronless gene is found in the nucleus, where it can inhibit DNA synthesis and promote S phase arrest coupled to apoptosis. The expression of this DNA binding protein is upregulated by transcription factor p53. [provided by RefSeq, Dec 2012]
Immunogen	A synthetic peptide of human KLLN
Gene ID	100144748
Swiss Prot	B2CW77
Synonyms	CWS4; KILLIN
Reactivity	Human,Mouse,Rat
Application	WB
Recommended dilution	WB: 1:1000
Calculated MW	20 kDa
Observed MW	20 kDa
Host species	Rabbit
Clonality	Monoclonal
Clonality No.	DGR20220
Isotype	IgG
Purity	Affinity Purification
Conjugation	Un-conjugated
Concentration	1 mg/ml

Formulation

PBS Only

Storage Stability

Store at -20°C. Recommended to aliquot into single-use vials. Supplied in 1X PBS (pH 7.4). BSA and Azide Free. Stable for 12 months from date of receipt.



Western blot detection of KLLN in K562,C6,3T3,Hela cell lysates using [db14896](#)(1:1000 diluted).