

Recombinant

DGRmAb®

**Alpha-synuclein (DGR14457) Rabbit mAb (PBS Only)**

db14600-PBS

Package : 10µg 100µg

**Product Name** : Alpha-synuclein (DGR14457) Rabbit mAb (PBS Only)**Cat.No.:** db14600-PBS**Synonyms** : PD1; NACP; PARK1; PARK4**Application** : WB, IHC-P, IP**Reactivity** : Human,Mouse,Rat**Host species** : Rabbit**Background**

Alpha-synuclein is a member of the synuclein family, which also includes beta- and gamma-synuclein. Synucleins are abundantly expressed in the brain and alpha- and beta-synuclein inhibit phospholipase D2 selectively. SNCA may serve to integrate presynaptic signaling and membrane trafficking. Defects in SNCA have been implicated in the pathogenesis of Parkinson disease. SNCA peptides are a major component of amyloid plaques in the brains of patients with Alzheimer's disease. Alternatively spliced transcripts encoding different isoforms have been identified for this gene. [provided by RefSeq, Feb 2016]

**Immunogen**

Recombinant protein of human Alpha-synuclein

**Gene ID**

6622

**Swiss Prot**

P37840

**Synonyms**

PD1; NACP; PARK1; PARK4

**Reactivity**

Human,Mouse,Rat

**Application**

WB, IHC-P, IP

**Calculated MW**

15 kDa

**Observed MW**

18 kDa

**Host species**

Rabbit

**Clonality**

Monoclonal

**Clonality No.**

DGR14457

**Isotype**

IgG

**Purity**

Affinity Purification

**Conjugation**

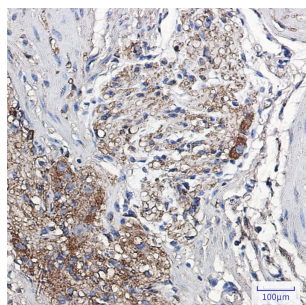
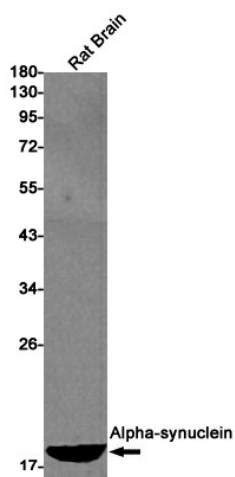
Un-conjugated

**Concentration** 1 mg/mL

**Formulation** PBS Only

**Storage Stability** Store at -20°C. Recommended to aliquot into single-use vials. Supplied in 1X PBS (pH 7.4). BSA and Azide Free. Stable for 12 months from date of receipt.

Western blot detection of Alpha-synuclein in Rat Brain lysates using Alpha-synuclein antibody(1:1000 diluted).



Immunohistochemical analysis of paraffin-embedded human colon cancer using [db14600](#) antibody.