

Recombinant

DGRmAb®

## IKK alpha (DGR15247) Rabbit mAb (PBS Only)

db14546-PBS

Package : 100µg

**Product Name :** IKK alpha (DGR15247) Rabbit mAb (PBS Only)**Cat.No.:** db14546-PBS**Synonyms :** IKK1; IKKA; IKBKA; TCF16; NFKB1A; IKK-alpha**Application :** WB, IHC-P, FC, IP**Reactivity :** Human,Mouse,Rat**Host species :** Rabbit**Background**

This gene encodes a member of the serine/threonine protein kinase family. The encoded protein, a component of a cytokine-activated protein complex that is an inhibitor of the essential transcription factor NF-kappa-B complex, phosphorylates sites that trigger the degradation of the inhibitor via the ubiquitination pathway, thereby activating the transcription factor. [provided by RefSeq, Jul 2008]

**Immunogen**

A synthetic peptide of human IKK alpha

**Gene ID**

1147

**Swiss Prot**

O15111

**Synonyms**

IKK1; IKKA; IKBKA; TCF16; NFKB1A; IKK-alpha

**Reactivity**

Human,Mouse,Rat

**Application**

WB, IHC-P, FC, IP

**Recommended dilution**

WB: 1:1000

IHC-P: 1:50

FC: 1:20

IP: 1:50

**Calculated MW**

85 kDa

**Observed MW**

85 kDa

**Host species**

Rabbit

**Clonality**

Monoclonal

**Clonality No.**

DGR15247

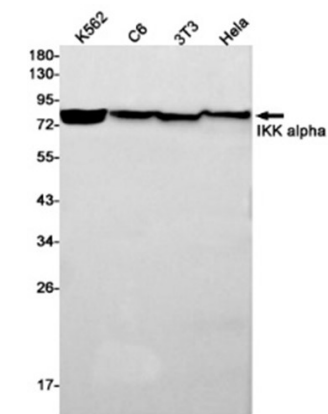
**Isotype**

IgG

**Purity**

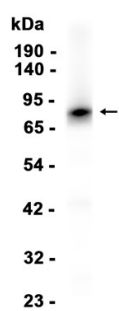
Affinity Purification

Conjugation	Un-conjugated
Concentration	1 mg/ml
Formulation	PBS Only
Storage Stability	Store at -20°C. Recommended to aliquot into single-use vials. Supplied in 1X PBS (pH 7.4). BSA and Azide Free. Stable for 12 months from date of receipt.



Western blot detection of IKK alpha in K562,C6,3T3,Hela cell lysates using [db14546](#)(1:1000 diluted).

Mouse kidney



Western blot analysis of extracts from Mouse kidney tissue using [db14546](#)