

Recombinant

DGRmAb®

## 14-3-3 gamma (DGR32150) Rabbit mAb (PBS Only)

db14479-PBS

Package : 100µg

**Product Name** : 14-3-3 gamma (DGR32150) Rabbit mAb (PBS Only)**Cat.No.:** db14479-PBS**Synonyms** : EIEE56; PPP1R170; 14-3-3GAMMA**Application** : WB**Reactivity** : Human,Mouse,Rat**Host species** : Rabbit**Background**

This gene product belongs to the 14-3-3 family of proteins which mediate signal transduction by binding to phosphoserine-containing proteins. This highly conserved protein family is found in both plants and mammals, and this protein is 100% identical to the rat ortholog. It is induced by growth factors in human vascular smooth muscle cells, and is also highly expressed in skeletal and heart muscles, suggesting an important role for this protein in muscle tissue. It has been shown to interact with RAF1 and protein kinase C, proteins involved in various signal transduction pathways.

[provided by RefSeq, Jul 2008]

**Immunogen**

A synthetic peptide of human 14-3-3 gamma/YWHAG

**Gene ID**

7532

**Swiss Prot**

P61981

**Synonyms**

EIEE56; PPP1R170; 14-3-3GAMMA

**Reactivity**

Human,Mouse,Rat

**Application**

WB

**Recommended dilution**

WB: 1:1000-1:5000

**Calculated MW**

28 kDa

**Observed MW**

28 kDa

**Host species**

Rabbit

**Clonality**

Monoclonal

**Clonality No.**

DGR32150

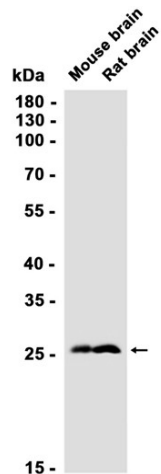
**Isotype**

IgG

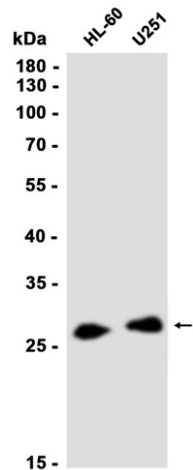
**Purity**

Affinity Purification

Conjugation	Un-conjugated
Concentration	1 mg/ml
Formulation	PBS Only
Storage Stability	Store at -20°C. Recommended to aliquot into single-use vials. Supplied in 1X PBS (pH 7.4). BSA and Azide Free. Stable for 12 months from date of receipt.



Western blot analysis of extracts from Mouse brain, Rat brain tissues using [db14479](#) at 1:1000.



Western blot analysis of extracts from HL-60, U251 cells using [db14479](#) at 1:1000.