

Recombinant

DGRmAb®

KAP1 (DGR18382) Rabbit mAb (PBS Only)

db14397-PBS

Package : 100µg

Product Name : KAP1 (DGR18382) Rabbit mAb (PBS Only)**Cat.No.:** db14397-PBS**Synonyms** : KAP1; TF1B; RNF96; TIF1B; PPP1R157**Application** : WB, IHC-P, ICC/IF**Reactivity** : Human,Mouse,Rat**Host species** : Rabbit**Background**

The protein encoded by this gene mediates transcriptional control by interaction with the Kruppel-associated box repression domain found in many transcription factors. The protein localizes to the nucleus and is thought to associate with specific chromatin regions. The protein is a member of the tripartite motif family. This tripartite motif includes three zinc-binding domains, a RING, a B-box type 1 and a B-box type 2, and a coiled-coil region. [provided by RefSeq, Jul 2008]

Immunogen

A synthetic peptide of human KAP1

Gene ID

10155

Swiss Prot

Q13263

Synonyms

KAP1; TF1B; RNF96; TIF1B; PPP1R157

Reactivity

Human,Mouse,Rat

Application

WB, IHC-P, ICC/IF

Recommended dilution

WB: 1:1000-1:5000

IHC-P: 1:200-1:500

ICC/IF: 1:100-1:200

Calculated MW

89 kDa

Observed MW

100 kDa

Host species

Rabbit

Clonality

Monoclonal

Clonality No.

DGR18382

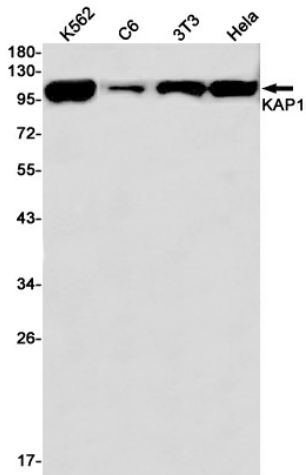
Isotype

IgG

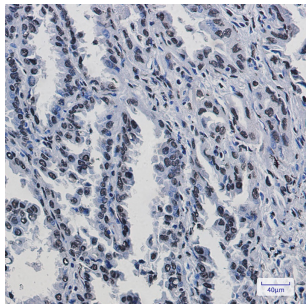
Purity

Affinity Purification

Conjugation	Un-conjugated
Concentration	1 mg/ml
Formulation	PBS Only
Storage Stability	Store at -20°C. Recommended to aliquot into single-use vials. Supplied in 1X PBS (pH 7.4). BSA and Azide Free. Stable for 12 months from date of receipt.



Western blot detection of KAP1 in K562,C6,3T3,Hela cell lysates using [db14397](#)(1:1000 diluted).



Immunohistochemical analysis of paraffin-embedded human lung cancer using [db14397](#)