

Recombinant

DGRmAb®

p38 (DGR14777) Rabbit mAb (PBS Only)

db14381-PBS

Package : 10µg 100µg

Product Name : p38 (DGR14777) Rabbit mAb (PBS Only)**Cat.No.:** db14381-PBS**Synonyms** : RK; p38; CSBP; EXIP; Mxi2; CSBP1; CSBP2; CSPB1; PRKM14; PRKM15; SAPK2A; p38ALPHA**Application** : WB, IHC, ICC/IF**Reactivity** : Human, Mouse, Rat**Host species** : Rabbit**Background**

The protein encoded by this gene is a member of the MAP kinase family. MAP kinases act as an integration point for multiple biochemical signals, and are involved in a wide variety of cellular processes such as proliferation, differentiation, transcription regulation and development. This kinase is activated by various environmental stresses and proinflammatory cytokines. The activation requires its phosphorylation by MAP kinase kinases (MKKs), or its autophosphorylation triggered by the interaction of MAP3K7IP1/TAB1 protein with this kinase. The substrates of this kinase include transcription regulator ATF2, MEF2C, and MAX, cell cycle regulator CDC25B, and tumor suppressor p53, which suggest the roles of this kinase in stress related transcription and cell cycle regulation, as well as in genotoxic stress response. Four alternatively spliced transcript variants of this gene encoding distinct isoforms have been reported. [provided by RefSeq, Jul 2008]

Immunogen

A synthetic peptide of human p38

Gene ID

1432

Swiss Prot

Q16539

Synonyms

RK; p38; CSBP; EXIP; Mxi2; CSBP1; CSBP2; CSPB1; PRKM14; PRKM15; SAPK2A; p38ALPHA

Reactivity

Human, Mouse, Rat

Application

WB, IHC, ICC/IF

Calculated MW

41 kDa

Observed MW

41 kDa

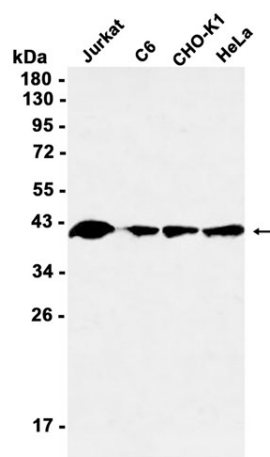
Host species

Rabbit

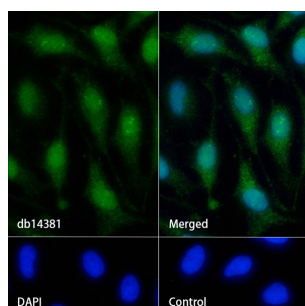
Clonality

Monoclonal

| | |
|--------------------------|---|
| Clonality No. | DGR14777 |
| Isotype | IgG |
| Purity | Affinity Purification |
| Conjugation | Un-conjugated |
| Concentration | 1 mg/mL |
| Formulation | PBS Only |
| Storage Stability | Store at -20°C. Recommended to aliquot into single-use vials. Supplied in 1X PBS (pH 7.4). BSA and Azide Free. Stable for 12 months from date of receipt. |



Western blot analysis of extracts from Jurkat, C6, CHO-K1, HeLa cells using db14381 at 1:1000.



Immunofluorescence analysis of HeLa cells labelling p38 with db14381.

The cells were fixed with 4% PFA (10min, RT) followed by treatment with 0.1% Triton X-100 (10min, RT), and blocked in 1% BSA/10% normal goat serum/0.3M glycine in 0.1% PBS-Tween 20 for 1h. The cells were then incubate with db14381 (1:100) at room temprature for 1h, followed by a further incubation at room temperature for 45min with Goat Anti Rabbit IgG (H+L)-AF488 (db10005, shown in green). Nuclear DNA was labeled in blue with DAPI.

Control: Secondary antibody only.