

Recombinant

DGRmAb®

## EVPL (DGR20030) Rabbit mAb (PBS Only)

db14374-PBS

Package : 100µg

**Product Name :** EVPL (DGR20030) Rabbit mAb (PBS Only)**Cat.No.:** db14374-PBS**Synonyms :** EVPK**Application :** WB, IHC-P, FC**Reactivity :** Human**Host species :** Rabbit**Background**

This gene encodes a member of the plakin family of proteins that forms a component of desmosomes and the epidermal cornified envelope. This gene is located in the tylosis oesophageal cancer locus on chromosome 17q25, and its deletion is associated with both familial and sporadic forms of oesophageal squamous cell carcinoma. Patients suffering from the autoimmune mucocutaneous disorder, paraneoplastic pemphigus, develop antibodies against the encoded protein. [provided by RefSeq, Jul 2016]

**Immunogen**

Recombinant protein of human EVPL

**Gene ID**

2125

**Swiss Prot**

Q92817

**Synonyms**

EVPK

**Reactivity**

Human

**Application**

WB, IHC-P, FC

**Recommended dilution**

WB: 1:1000-1:5000

IHC-P: 1:200-1:1000

FC: 1:100

**Calculated MW**

232 kDa

**Observed MW**

232 kDa

**Host species**

Rabbit

**Clonality**

Monoclonal

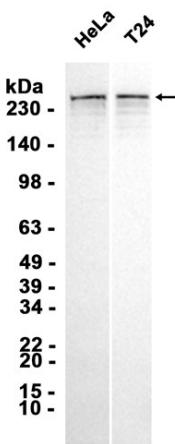
**Clonality No.**

DGR20030

**Isotype**

IgG

Purity	Affinity Purification
Conjugation	Un-conjugated
Concentration	1 mg/ml
Formulation	PBS Only
Storage Stability	Store at -20°C. Recommended to aliquot into single-use vials. Supplied in 1X PBS (pH 7.4). BSA and Azide Free. Stable for 12 months from date of receipt.



Western blot analysis of extracts from HeLa, T24 cells using [db14374](#)