

Recombinant

DGRmAb®

Cullin 1 (DGR13114) Rabbit mAb (PBS Only)

db14350-PBS

Package : 100µg

Product Name : Cullin 1 (DGR13114) Rabbit mAb (PBS Only)**Cat.No.:** db14350-PBS**Synonyms :** CUL1**Application :** WB, ICC/IF**Reactivity :** Human,Mouse,Rat**Host species :** Rabbit**Background**

Core component of multiple cullin-RING-based SCF (SKP1-CUL1-F-box protein) E3 ubiquitin-protein ligase complexes, which mediate the ubiquitination of proteins involved in cell cycle progression, signal transduction and transcription. SCF complexes and ARIH1 collaborate in tandem to mediate ubiquitination of target proteins (PubMed:27565346). In the SCF complex, serves as a rigid scaffold that organizes the SKP1-F-box protein and RBX1 subunits.

Immunogen

A synthetic peptide of human Cullin 1

Gene ID

8454

Swiss Prot

Q13616

Synonyms

CUL1

Reactivity

Human,Mouse,Rat

Application

WB, ICC/IF

Recommended dilution

WB: 1:1000

ICC/IF: 1:100-1:200

Calculated MW

90 kDa

Observed MW

90 kDa

Host species

Rabbit

Clonality

Monoclonal

Clonality No.

DGR13114

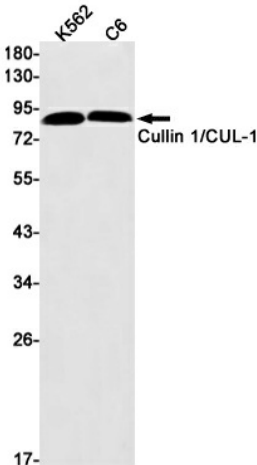
Isotype

IgG

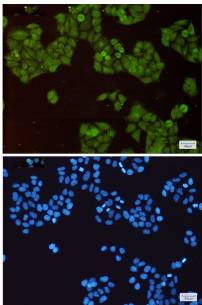
Purity

Affinity Purification

Conjugation	Un-conjugated
Concentration	1 mg/ml
Formulation	PBS Only
Storage Stability	Store at -20°C. Recommended to aliquot into single-use vials. Supplied in 1X PBS (pH 7.4). BSA and Azide Free. Stable for 12 months from date of receipt.



Western blot detection of Cullin 1/CUL-1 in K562,C6 cell lysates using [db14350](#)(1:1000 diluted).



Immunofluorescent analysis of HeLa cells using [db14350](#)