

Recombinant

DGRmAb®

**LIME (DGR20270) Rabbit mAb (PBS Only)**

db14309-PBS

Package : 100µg

**Product Name** : LIME (DGR20270) Rabbit mAb (PBS Only)**Cat.No.:** db14309-PBS**Synonyms** : LIME; dJ583P15.4**Application** : WB, IHC-P**Reactivity** : Human**Host species** : Rabbit**Background**

This gene encodes a transmembrane adaptor protein that links the T and B-cell receptor stimulation to downstream signaling pathways via its association with the Src family kinases Lck and Lyn, respectively. Alternative splicing of this gene results in multiple transcript variants. [provided by RefSeq, Mar 2015]

**Immunogen**

Recombinant protein of human LIME

**Gene ID**

54923

**Swiss Prot**

Q9H400

**Synonyms**

LIME; dJ583P15.4

**Reactivity**

Human

**Application**

WB, IHC-P

**Recommended dilution**

WB: 1:1000-1:5000

IHC-P: 1:200-1:2000

**Calculated MW**

31 kDa

**Observed MW**

31 kDa

**Host species**

Rabbit

**Clonality**

Monoclonal

**Clonality No.**

DGR20270

**Isotype**

IgG

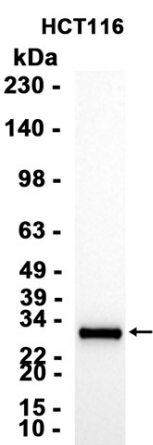
**Purity**

Affinity Purification

**Conjugation**

Un-conjugated

|                   |   |
|-------------------|---|
| Concentration     | 1 mg/ml   |
| Formulation       | PBS Only  |
| Storage Stability | Store at -20°C. Recommended to aliquot into single-use vials. Supplied in 1X PBS (pH 7.4). BSA and Azide Free. Stable for 12 months from date of receipt. |



Western blot analysis of extracts from HCT116 cells using [db14309](#)