

Recombinant

DGRmAb®

Filamin C (DGR20320) Rabbit mAb (PBS Only)

db14301-PBS

Package : 100µg

Product Name : Filamin C (DGR20320) Rabbit mAb (PBS Only)**Cat.No.:** db14301-PBS**Synonyms** : ABPA; ABPL; FLN2; MFM5; MPD4; RCM5; CMH26; ABP-280; ABP280A**Application** : WB, IHC-P**Reactivity** : Human**Host species** : Rabbit**Background**

This gene encodes one of three related filamin genes, specifically gamma filamin. These filamin proteins crosslink actin filaments into orthogonal networks in cortical cytoplasm and participate in the anchoring of membrane proteins for the actin cytoskeleton. Three functional domains exist in filamin: an N-terminal filamentous actin-binding domain, a C-terminal self-association domain, and a membrane glycoprotein-binding domain. Two transcript variants encoding different isoforms have been found for this gene. [provided by RefSeq, Jul 2008]

Immunogen

A synthetic peptide of human Filamin C

Gene ID

2318

Swiss Prot

Q14315

Synonyms

ABPA; ABPL; FLN2; MFM5; MPD4; RCM5; CMH26; ABP-280; ABP280A

Reactivity

Human

Application

WB, IHC-P

Recommended dilution

WB: 1:2000-1:20000

IHC-P: 1:100-1:200

Calculated MW

291 kDa

Observed MW

291 kDa

Host species

Rabbit

Clonality

Monoclonal

Clonality No.

DGR20320

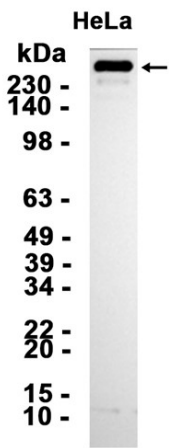
Isotype

IgG

Purity

Affinity Purification

Conjugation	Un-conjugated
Concentration	1 mg/ml
Formulation	PBS Only
Storage Stability	Store at -20°C. Recommended to aliquot into single-use vials. Supplied in 1X PBS (pH 7.4). BSA and Azide Free. Stable for 12 months from date of receipt.



Western blot analysis of extracts from HeLa cells using [db14301](#)