

Recombinant

DGRmAb®

## MEF2BNB (DGR20355) Rabbit mAb (PBS Only)

db14293-PBS

Package : 100µg

**Product Name :** MEF2BNB (DGR20355) Rabbit mAb (PBS Only)**Cat.No.:** db14293-PBS**Synonyms :** MEF2BNB**Application :** WB**Reactivity :** Human,Mouse,Rat**Host species :** Rabbit

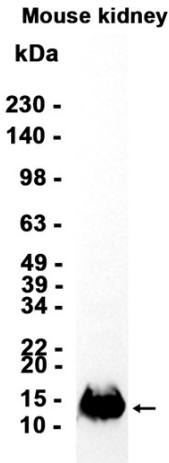
<b>Background</b>	As part of the BORC complex may play a role in lysosomes movement and localization at the cell periphery. Associated with the cytosolic face of lysosomes, the BORC complex may recruit ARL8B and couple lysosomes to microtubule plus-end-directed kinesin motor.
<b>Immunogen</b>	Recombinant protein of human MEF2BNB
<b>Gene ID</b>	729991
<b>Swiss Prot</b>	Q96FH0
<b>Synonyms</b>	MEF2BNB
<b>Reactivity</b>	Human,Mouse,Rat
<b>Application</b>	WB
<b>Recommended dilution</b>	WB: 1:1000-1:5000
<b>Calculated MW</b>	13 kDa
<b>Observed MW</b>	13 kDa
<b>Host species</b>	Rabbit
<b>Clonality</b>	Monoclonal
<b>Clonality No.</b>	DGR20355
<b>Isotype</b>	IgG
<b>Purity</b>	Affinity Purification
<b>Conjugation</b>	Un-conjugated
<b>Concentration</b>	1 mg/ml

Formulation

PBS Only

Storage Stability

Store at -20°C. Recommended to aliquot into single-use vials. Supplied in 1X PBS (pH 7.4). BSA and Azide Free. Stable for 12 months from date of receipt.



Western blot analysis of extracts from Mouse kidney tissue using [db14293](#)