

Recombinant

DGRmAb®

GCLC (DGR20538) Rabbit mAb (PBS Only)

db14254-PBS

Package : 100µg

Product Name : GCLC (DGR20538) Rabbit mAb (PBS Only)**Cat.No.:** db14254-PBS**Synonyms** : GCL; GCS; GLCL; GLCLC**Application** : WB, IP**Reactivity** : Human,Mouse,Rat**Host species** : Rabbit**Background**

Glutamate-cysteine ligase, also known as gamma-glutamylcysteine synthetase is the first rate-limiting enzyme of glutathione synthesis. The enzyme consists of two subunits, a heavy catalytic subunit and a light regulatory subunit. This locus encodes the catalytic subunit, while the regulatory subunit is derived from a different gene located on chromosome 1p22-p21. Mutations at this locus have been associated with hemolytic anemia due to deficiency of gamma-glutamylcysteine synthetase and susceptibility to myocardial infarction.[provided by RefSeq, Oct 2010]

Immunogen

A synthetic peptide of human GCLC

Gene ID

2729

Swiss Prot

P48506

Synonyms

GCL; GCS; GLCL; GLCLC

Reactivity

Human,Mouse,Rat

Application

WB, IP

Recommended dilution

WB: 1:2000-1:20000

IP: 1:20

Calculated MW

73 kDa

Observed MW

73 kDa

Host species

Rabbit

Clonality

Monoclonal

Clonality No.

DGR20538

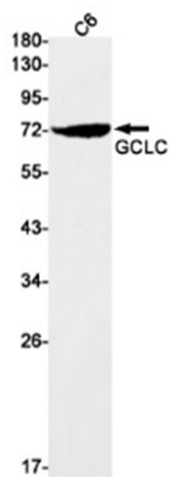
Isotype

IgG

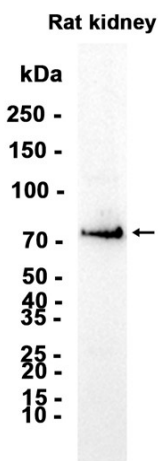
Purity

Affinity Purification

Conjugation	Un-conjugated
Concentration	1 mg/ml
Formulation	PBS Only
Storage Stability	Store at -20°C. Recommended to aliquot into single-use vials. Supplied in 1X PBS (pH 7.4). BSA and Azide Free. Stable for 12 months from date of receipt.



Western blot detection of GCLC in C6 cell lysates using [db14254](#)(1:1000 diluted).



Western blot analysis of extracts from Rat kidney tissue using [db14254](#)