

Recombinant

DGRmAb®

EGFR (DGR13669) Rabbit mAb (PBS Only)

db14238-PBS

Package : 100µg

Product Name : EGFR (DGR13669) Rabbit mAb (PBS Only)**Cat.No.:** db14238-PBS**Synonyms** : ERBB; HER1; mENA; ERBB1; PIG61; NISBD2**Application** : WB, IHC-P, ICC/IF, FC, IP**Reactivity** : Human,Mouse,Rat**Host species** : Rabbit**Background**

The protein encoded by this gene is a transmembrane glycoprotein that is a member of the protein kinase superfamily. This protein is a receptor for members of the epidermal growth factor family. EGFR is a cell surface protein that binds to epidermal growth factor. Binding of the protein to a ligand induces receptor dimerization and tyrosine autophosphorylation and leads to cell proliferation. Mutations in this gene are associated with lung cancer. [provided by RefSeq, Jun 2016]

Immunogen

A synthetic peptide of human EGFR

Gene ID

1956

Swiss Prot

P00533

Synonyms

ERBB; HER1; mENA; ERBB1; PIG61; NISBD2

Reactivity

Human,Mouse,Rat

Application

WB, IHC-P, ICC/IF, FC, IP

Recommended dilution

WB: 1:1000-1:5000

IHC-P: 1:100-1:200

ICC/IF: 1:200-1:500

FC: 1:100-1:1000

IP: 1:50

Calculated MW

134 kDa

Observed MW

175 kDa

Host species

Rabbit

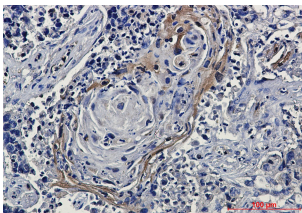
Clonality

Monoclonal

Clonality No.

DGR13669

Isotype	IgG
Purity	Affinity Purification
Conjugation	Un-conjugated
Concentration	1 mg/ml
Formulation	PBS Only
Storage Stability	Store at -20°C. Recommended to aliquot into single-use vials. Supplied in 1X PBS (pH 7.4). BSA and Azide Free. Stable for 12 months from date of receipt.



Immunohistochemical analysis of paraffin-embedded human lung cancer tissue using [db14238](#)