

Recombinant

DGRmAb®

**ELOVL5 (DGR11231) Rabbit mAb (PBS Only)**

db14219-PBS

Package : 100µg

**Product Name** : ELOVL5 (DGR11231) Rabbit mAb (PBS Only)**Cat.No.:** db14219-PBS**Synonyms** : HELO1; SCA38; dJ483K16.1**Application** : WB, ICC/IF, FC**Reactivity** : Human,Mouse,Rat**Host species** : Rabbit**Background**

This gene belongs to the ELO family. It is highly expressed in the adrenal gland and testis, and encodes a multi-pass membrane protein that is localized in the endoplasmic reticulum. This protein is involved in the elongation of long-chain polyunsaturated fatty acids. Mutations in this gene have been associated with spinocerebellar ataxia-38 (SCA38). Alternatively spliced transcript variants have been found for this gene. [provided by RefSeq, Sep 2014]

**Immunogen**

A synthetic peptide of human ELOVL5

**Gene ID**

60481

**Swiss Prot**

Q9NYP7

**Synonyms**

HELO1; SCA38; dJ483K16.1

**Reactivity**

Human,Mouse,Rat

**Application**

WB, ICC/IF, FC

**Recommended dilution**

WB: 1:1000  
ICC/IF: 1:100  
FC: 1:20-1:50

**Calculated MW**

35 kDa

**Observed MW**

35 kDa

**Host species**

Rabbit

**Clonality**

Monoclonal

**Clonality No.**

DGR11231

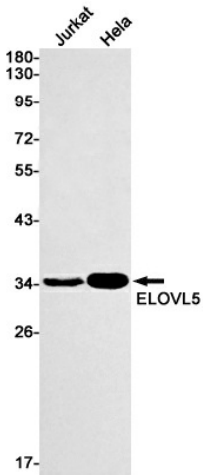
**Isotype**

IgG

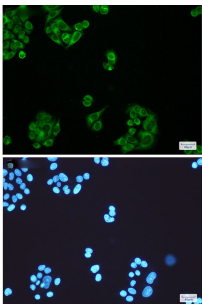
**Purity**

Affinity Purification

Conjugation	Un-conjugated
Concentration	1 mg/ml
Formulation	PBS Only
Storage Stability	Store at -20°C. Recommended to aliquot into single-use vials. Supplied in 1X PBS (pH 7.4). BSA and Azide Free. Stable for 12 months from date of receipt.



Western blot detection of ELOVL5 in Jurkat,HeLa cell lysates using [db14219](#)(1:1000 diluted).



Immunofluorescent analysis of HeLa cells using [db14219](#)