

Recombinant

DGRmAb®

EPHB4 (DGR33921) Rabbit mAb (PBS Only)

db14113-PBS

Package : 100µg

Product Name : EPHB4 (DGR33921) Rabbit mAb (PBS Only)**Cat.No.:** db14113-PBS**Synonyms** : HTK; MYK1; HFASD; CMAVM2; LMPHM7; TYRO11**Application** : WB, IHC-P**Reactivity** : Human,Mouse**Host species** : Rabbit**Background**

Ephrin receptors and their ligands, the ephrins, mediate numerous developmental processes, particularly in the nervous system. Based on their structures and sequence relationships, ephrins are divided into the ephrin-A (EFNA) class, which are anchored to the membrane by a glycosylphosphatidylinositol linkage, and the ephrin-B (EFNB) class, which are transmembrane proteins. The Eph family of receptors are divided into 2 groups based on the similarity of their extracellular domain sequences and their affinities for binding ephrin-A and ephrin-B ligands. Ephrin receptors make up the largest subgroup of the receptor tyrosine kinase (RTK) family. The protein encoded by this gene binds to ephrin-B2 and plays an essential role in vascular development. [provided by RefSeq, Jul 2008]

Immunogen

Recombinant protein of human Eph receptor B4/HTK

Gene ID

2050

Swiss Prot

P54760

Synonyms

HTK; MYK1; HFASD; CMAVM2; LMPHM7; TYRO11

Reactivity

Human,Mouse

Application

WB, IHC-P

Calculated MW

108 kDa

Observed MW

135 kDa

Host species

Rabbit

Clonality

Monoclonal

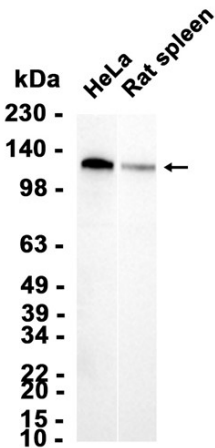
Clonality No.

DGR33921

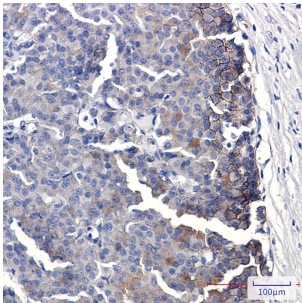
Isotype

IgG

Purity	Affinity Purification
Conjugation	Un-conjugated
Concentration	1 mg/mL
Formulation	PBS Only
Storage Stability	Store at -20°C. Recommended to aliquot into single-use vials. Supplied in 1X PBS (pH 7.4). BSA and Azide Free. Stable for 12 months from date of receipt.



Western blot analysis of extracts from HeLa cells and Rat spleen tissue using db14113 at 1:1000.



Immunohistochemical analysis of paraffin-embedded human breast cancer using db14113 antibody.