

Recombinant

DGRmAb®

## SLC31A1 (DGR31527) Rabbit mAb (PBS Only)

db13733-PBS

Package : 100µg

**Product Name** : SLC31A1 (DGR31527) Rabbit mAb (PBS Only)**Cat.No.:** db13733-PBS**Synonyms** : CTR1; COPT1**Application** : WB**Reactivity** : Human**Host species** : Rabbit**Background**

The protein encoded by this gene is a high-affinity copper transporter found in the cell membrane. The encoded protein functions as a homotrimer to effect the uptake of dietary copper. [provided by RefSeq, Aug 2011]

**Immunogen**

A synthetic peptide of human SLC31A1/CTR1

**Gene ID**

1317

**Swiss Prot**

O15431

**Synonyms**

CTR1; COPT1

**Reactivity**

Human

**Application**

WB

**Recommended dilution**

WB: 1:1000-1:5000

**Calculated MW**

21 kDa

**Observed MW**

26-34 kDa

**Host species**

Rabbit

**Clonality**

Monoclonal

**Clonality No.**

DGR31527

**Isotype**

IgG

**Purity**

Affinity Purification

**Conjugation**

Un-conjugated

**Concentration**

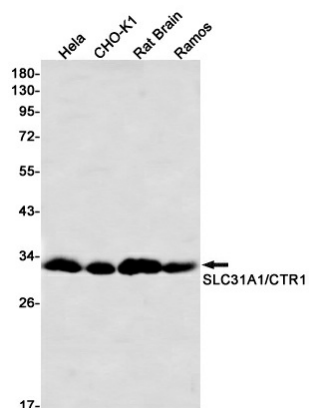
1 mg/ml

**Formulation**

PBS Only

**Storage Stability**

Store at -20°C. Recommended to aliquot into single-use vials. Supplied in 1X PBS (pH 7.4). BSA and Azide Free. Stable for 12 months from date of receipt.



Western blot detection of SLC31A1/CTR1 in HeLa, CHO-K1, Rat Brain, Ramos cell lysates using [db13733](#) (1:1000 diluted).