

Recombinant

DGRmAb®

Mre11 (DGR19407) Rabbit mAb (PBS Only)

db13499-PBS

Package : 10µg 100µg

Product Name : Mre11 (DGR19407) Rabbit mAb (PBS Only)**Cat.No.:** db13499-PBS**Synonyms** : ATLD; HNGS1; MRE11A; MRE11B**Application** : WB, IHC-P, FC**Reactivity** : Human,Mouse,Rat**Host species** : Rabbit**Background**

This gene encodes a nuclear protein involved in homologous recombination, telomere length maintenance, and DNA double-strand break repair. By itself, the protein has 3' to 5' exonuclease activity and endonuclease activity. The protein forms a complex with the RAD50 homolog; this complex is required for nonhomologous joining of DNA ends and possesses increased single-stranded DNA endonuclease and 3' to 5' exonuclease activities. In conjunction with a DNA ligase, this protein promotes the joining of noncomplementary ends in vitro using short homologies near the ends of the DNA fragments. This gene has a pseudogene on chromosome 3. Alternative splicing of this gene results in two transcript variants encoding different isoforms. [provided by RefSeq, Jul 2008]

Immunogen

Recombinant protein of human Mre11

Gene ID

4361

Swiss Prot

P49959

Synonyms

ATLD; HNGS1; MRE11A; MRE11B

Reactivity

Human,Mouse,Rat

Application

WB, IHC-P, FC

Calculated MW

81 kDa

Observed MW

81 kDa

Host species

Rabbit

Clonality

Monoclonal

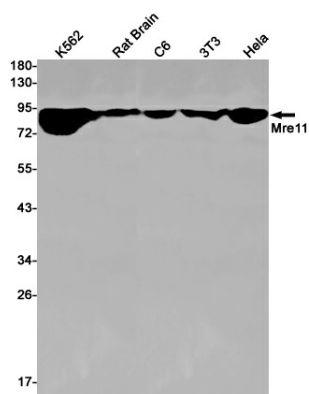
Clonality No.

DGR19407

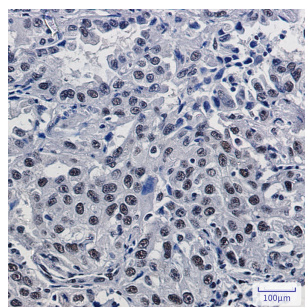
Isotype

IgG

Purity	Affinity Purification
Conjugation	Un-conjugated
Concentration	1 mg/mL
Formulation	PBS Only
Storage Stability	Store at -20°C. Recommended to aliquot into single-use vials. Supplied in 1X PBS (pH 7.4). BSA and Azide Free. Stable for 12 months from date of receipt.



Western blot detection of Mre11 in K562,Rat Brain,C6,3T3,HeLa cell lysates using Mre11 antibody(1:1000 diluted).



Immunohistochemical analysis of paraffin-embedded human lung cancer using [db13499](#) antibody.