

Recombinant

DGRmAb®

STAT1 alpha (DGR14948) Rabbit mAb (PBS Only)

db13473-PBS

Package : 100µg

Product Name : STAT1 alpha (DGR14948) Rabbit mAb (PBS Only)**Cat.No.:** db13473-PBS**Synonyms** : CANDF7; IMD31A; IMD31B; IMD31C; ISGF-3; STAT91**Application** : WB, IP**Reactivity** : Human,Mouse**Host species** : Rabbit**Background**

The protein encoded by this gene is a member of the STAT protein family. In response to cytokines and growth factors, STAT family members are phosphorylated by the receptor associated kinases, and then form homo- or heterodimers that translocate to the cell nucleus where they act as transcription activators. This protein can be activated by various ligands including interferon-alpha, interferon-gamma, EGF, PDGF and IL6. This protein mediates the expression of a variety of genes, which is thought to be important for cell viability in response to different cell stimuli and pathogens. Two alternatively spliced transcript variants encoding distinct isoforms have been described. [provided by RefSeq, Jul 2008]

Immunogen

A synthetic peptide of human STAT1 alpha

Gene ID

6772

Swiss Prot

P42224

Synonyms

CANDF7; IMD31A; IMD31B; IMD31C; ISGF-3; STAT91

Reactivity

Human,Mouse

Application

WB, IP

Recommended dilutionWB: 1:1000
IP: 1:20-1:50**Calculated MW**

87 kDa

Observed MW

87 kDa

Host species

Rabbit

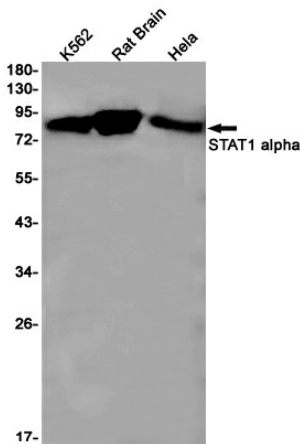
Clonality

Monoclonal

Clonality No.

DGR14948

Isotype	IgG
Purity	Affinity Purification
Conjugation	Un-conjugated
Concentration	1 mg/ml
Formulation	PBS Only
Storage Stability	Store at -20°C. Recommended to aliquot into single-use vials. Supplied in 1X PBS (pH 7.4). BSA and Azide Free. Stable for 12 months from date of receipt.



Western blot detection of STAT1 alpha in K562,Rat Brain,HeLa cell lysates using [db13473](#)(1:1000 diluted).