

Recombinant

DGRmAb®

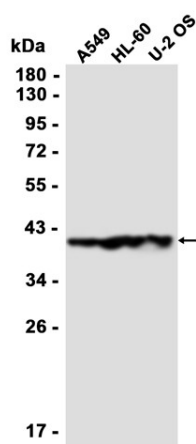
HIF1AN (DGR31952) Rabbit mAb (PBS Only)

db13431-PBS

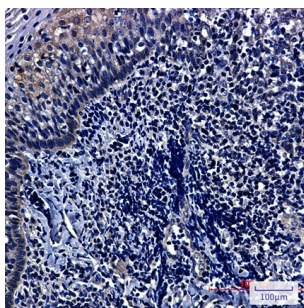
Package : 10µg 100µg

Product Name : HIF1AN (DGR31952) Rabbit mAb (PBS Only)**Cat.No.:** db13431-PBS**Synonyms** : FIH1**Application** : WB, IHC-P, ICC/IF, FC**Reactivity** : Human**Host species** : Rabbit

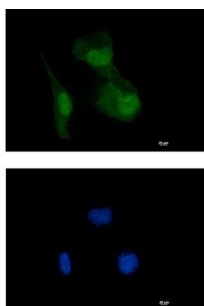
Background	Hydroxylates HIF-1 alpha at 'Asn-803' in the C-terminal transactivation domain (CAD)
Immunogen	A synthetic peptide of human HIF1AN/FIH-1
Gene ID	55662
Swiss Prot	Q9NWT6
Synonyms	FIH1
Reactivity	Human
Application	WB, IHC-P, ICC/IF, FC
Calculated MW	40 kDa
Observed MW	40 kDa
Host species	Rabbit
Clonality	Monoclonal
Clonality No.	DGR31952
Isotype	IgG
Purity	Affinity Purification
Conjugation	Un-conjugated
Concentration	1 mg/mL
Formulation	PBS Only
Storage Stability	Store at -20°C. Recommended to aliquot into single-use vials. Supplied in 1X PBS (pH 7.4). BSA and Azide Free. Stable for 12 months from date of receipt.



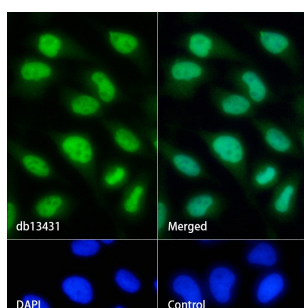
Western blot analysis of extracts from A549, HL-60, U-2 OS cells using [db13431](#) at 1:1000.



Immunohistochemical analysis of paraffin-embedded human tonsil tissue using [db13431](#) antibody.



Immunofluorescent analysis of HT-1080 cells using [db13431](#) antibody (green), and DAPI (blue).



Immunofluorescence analysis of HeLa cells labelling HIF1AN with [db13431](#).

The cells were fixed with 4% PFA (10min, RT) followed by treatment with 0.1% Triton X-100 (10min, RT), and blocked in 1% BSA/10% normal goat serum/0.3M glycine in 0.1% PBS-Tween 20 for 1h. The cells were then incubate with [db13431](#) (1:100) at room temperature for 1h, followed by a further incubation at room temperature for 45min with Goat Anti Rabbit IgG (H+L)-AF488 ([db10005](#), shown in green). Nuclear DNA was labeled in blue with DAPI.

Control: Secondary antibody only.