

Recombinant

DGRmAb®

**GNB2 (DGR20628) Rabbit mAb (PBS Only)**

db13305-PBS

Package : 100µg

**Product Name :** GNB2 (DGR20628) Rabbit mAb (PBS Only)**Cat.No.:** db13305-PBS**Synonyms :** G protein subunit beta-2; Transducin beta chain 2**Application :** WB**Reactivity :** Human,Mouse,Rat**Host species :** Rabbit**Background**

Heterotrimeric guanine nucleotide-binding proteins (G proteins), which integrate signals between receptors and effector proteins, are composed of an alpha, a beta, and a gamma subunit. These subunits are encoded by families of related genes. This gene encodes a beta subunit. Beta subunits are important regulators of alpha subunits, as well as of certain signal transduction receptors and effectors. This gene contains a trinucleotide (CCG) repeat length polymorphism in its 5' UTR. [provided by RefSeq, Jul 2008]

**Immunogen**

A synthetic peptide of human GNB2

**Gene ID**

2783

**Swiss Prot**

P62879

**Synonyms**

G protein subunit beta-2; Transducin beta chain 2

**Reactivity**

Human,Mouse,Rat

**Application**

WB

**Recommended dilution**

WB: 1:1000

**Calculated MW**

37 kDa

**Observed MW**

32 kDa

**Host species**

Rabbit

**Clonality**

Monoclonal

**Clonality No.**

DGR20628

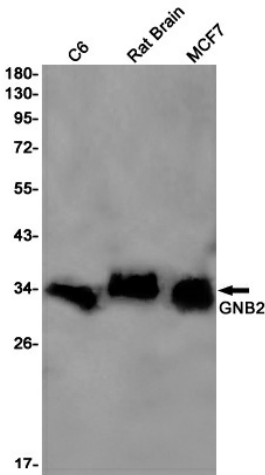
**Isotype**

IgG

**Purity**

Affinity Purification

Conjugation	Un-conjugated
Concentration	1 mg/ml
Formulation	PBS Only
Storage Stability	Store at -20°C. Recommended to aliquot into single-use vials. Supplied in 1X PBS (pH 7.4). BSA and Azide Free. Stable for 12 months from date of receipt.



Western blot detection of GNB2 in C6,Rat Brain,MCF7 cell lysates using [db13305](#)(1:1000 diluted).