

Recombinant

DGRmAb®

## CLPX (DGR31430) Rabbit mAb (PBS Only)

db13197-PBS

Package : 100µg

**Product Name** : CLPX (DGR31430) Rabbit mAb (PBS Only)**Cat.No.:** db13197-PBS**Synonyms** : EPP2**Application** : WB, ICC/IF**Reactivity** : Human,Mouse,Rat**Host species** : Rabbit**Background**

The protein encoded by this gene is part of a protease found in mitochondria. This protease is ATP-dependent and targets specific proteins for degradation. The protease consists of two heptameric rings of the CLPP catalytic subunit sandwiched between two hexameric rings of the chaperone subunit encoded by this gene. Targeted proteins are unwound by this protein and then passed on to the CLPP subunit for degradation. Two transcript variants, one protein-coding and the other non-protein coding, have been found for this gene. [provided by RefSeq, Nov 2015]

**Immunogen**

A synthetic peptide of human CLPX

**Gene ID**

10845

**Swiss Prot**

O76031

**Synonyms**

EPP2

**Reactivity**

Human,Mouse,Rat

**Application**

WB, ICC/IF

**Recommended dilution**

WB: 1:1000-1:5000

ICC/IF: 1:100-1:200

**Calculated MW**

69 kDa

**Observed MW**

69 kDa

**Host species**

Rabbit

**Clonality**

Monoclonal

**Clonality No.**

DGR31430

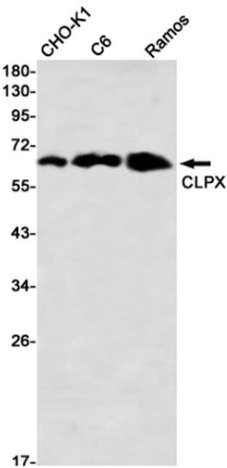
**Isotype**

IgG

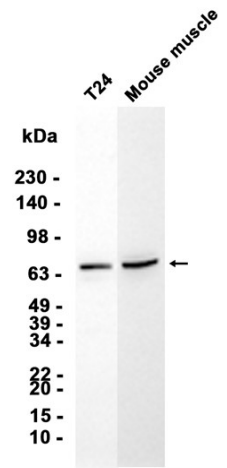
**Purity**

Affinity Purification

Conjugation	Un-conjugated
Concentration	1 mg/ml
Formulation	PBS Only
Storage Stability	Store at -20°C. Recommended to aliquot into single-use vials. Supplied in 1X PBS (pH 7.4). BSA and Azide Free. Stable for 12 months from date of receipt.



Western blot detection of CLPX in CHO-K1,C6,Ramos using [db13197](#)(1:1000 diluted)



Western blot analysis of extracts from T24 cells and Mouse muscle tissue using [db13197](#)