

Recombinant

DGRmAb®

Lamin A/C (DGR17025) Rabbit mAb (PBS Only)

db13193-PBS

Package : 100µg

Product Name : Lamin A/C (DGR17025) Rabbit mAb (PBS Only)**Cat.No.:** db13193-PBS**Synonyms** : FPL; IDC; LFP; CDDC; EMD2; FPLD; HGPS; LDP1; LMN1; LMNC; MADA; PRO1; CDCD1; CMD1A;
FPLD2; LMNL1; CMT2B1; LGMD1B**Application** : WB, IHC-P, ICC/IF, FC, IP**Reactivity** : Human, Mouse, Rat**Host species** : Rabbit**Background**

The nuclear lamina consists of a two-dimensional matrix of proteins located next to the inner nuclear membrane. The lamin family of proteins make up the matrix and are highly conserved in evolution. During mitosis, the lamina matrix is reversibly disassembled as the lamin proteins are phosphorylated. Lamin proteins are thought to be involved in nuclear stability, chromatin structure and gene expression. Vertebrate lamins consist of two types, A and B. Alternative splicing results in multiple transcript variants. Mutations in this gene lead to several diseases: Emery-Dreifuss muscular dystrophy, familial partial lipodystrophy, limb girdle muscular dystrophy, dilated cardiomyopathy, Charcot-Marie-Tooth disease, and Hutchinson-Gilford progeria syndrome. [provided by RefSeq, Apr 2012]

Immunogen

A synthetic peptide of human Lamin A/C

Gene ID

4000

Swiss Prot

P02545

SynonymsFPL; IDC; LFP; CDDC; EMD2; FPLD; HGPS; LDP1; LMN1; LMNC; MADA; PRO1; CDCD1;
CMD1A; FPLD2; LMNL1; CMT2B1; LGMD1B**Reactivity**

Human, Mouse, Rat

Application

WB, IHC-P, ICC/IF, FC, IP

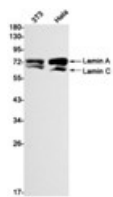
Recommended dilutionWB: 1:1000-1:5000
IHC-P: 1:100-1:200
ICC/IF: 1:100-1:200
FC: 1:20
IP: 1:10-1:100**Calculated MW**

74 kDa

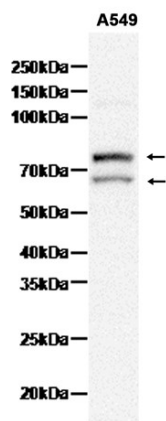
Observed MW

74,63 kDa

Host species	Rabbit
Clonality	Monoclonal
Clonality No.	DGR17025
Isotype	IgG
Purity	Affinity Purification
Conjugation	Un-conjugated
Concentration	1 mg/ml
Formulation	PBS Only
Storage Stability	Store at -20°C. Recommended to aliquot into single-use vials. Supplied in 1X PBS (pH 7.4). BSA and Azide Free. Stable for 12 months from date of receipt.



Western blot detection of Lamin A/C in 3T3,Hela cell lysates using [db13193](#)(1:1000 diluted).



Western blot analysis of extracts from A549 cells using [db13193](#)